

**COVERED EMPLOYMENT AND EARNINGS
STATE OF ARKANSAS
FIRST QUARTER 2000**

**MIKE HUCKABEE, GOVERNOR
STATE OF ARKANSAS**

**ED ROLLE, DIRECTOR
ARKANSAS EMPLOYMENT SECURITY DEPARTMENT**

**PUBLISHED BY
LABOR MARKET INFORMATION SECTION
ARKANSAS EMPLOYMENT SECURITY DEPARTMENT
POST OFFICE BOX 2981
LITTLE ROCK, ARKANSAS 72203-2981**

TELEPHONE: (501) 682-3198

STATE OF ARKANSAS HOME PAGE: <http://www.state.ar.us>

ARKANSAS EMPLOYMENT SECURITY DEPARTMENT HOME PAGE: <http://www.state.ar.us/esd/>

INTERNET SITE FOR THIS PUBLICATION: <http://www.state.ar.us/esd/001ene.htm>

RELEASED: SEPTEMBER 2000

TABLE OF CONTENTS

	Page
Description of Data	1
Industry Classification	1
Definition of Covered Employment and Earnings	2
Federal Government Employment	2
County Classification	2
Significant Developments During First Quarter 2000	3

LIST OF GRAPHS AND TABLES

Graph 1	Total and Manufacturing Average Covered Employment for Selected Years, Arkansas	7
Graph 2	Total Covered Earnings, by Calendar Quarter for Selected Years, Arkansas	8
Table 1	Quarterly Comparison of Covered Employment and Wages, by Industry	5
Table 2	Total Covered Employment in Arkansas, 1994-2000	6
Table 3	Manufacturing Covered Employment, 1994-2000	6
Table 4	Total Covered Earnings, 1994-2000	9
Table 5	Total Taxable Earnings, 1994-2000	10
Table 6	Covered Earnings in Manufacturing, 1994-2000	11
Table 7	State Summary - Employment and Total Earnings, by Industry, First Quarter 2000	12
Table 8	County Data - Employment and Total Earnings, by Industry, First Quarter 2000	27
Table 9	Federal Government Employment and Earnings in Arkansas, First Quarter 2000	53

**EMPLOYMENT AND EARNINGS
UNDER THE ARKANSAS EMPLOYMENT SECURITY LAW
FIRST QUARTER 2000**

DESCRIPTION OF DATA

This publication contains covered employment and payroll data by industry and county for the First Quarter 2000. These data are compiled from quarterly contribution and wage reports submitted by employers subject to the Arkansas Employment Security Law. An employing unit is a single physical location where business is conducted, production takes place, or services are provided. Employment data have been tabulated for each month of the quarter by industry under the Revised SIC Classification (see "Industry Classification" below) on a statewide and county basis. Payroll data represent the total wages paid during the quarter and are also shown by industry for the State and by publishable industry groups for each county. The tabulation of this data is a joint effort in conjunction with

the Bureau of Labor Statistics. In addition, there are tables included which set out total covered employment and manufacturing employment by months, quarterly payrolls, and average weekly earnings for the years 1994 through 2000. This publication contains revisions to Fourth Quarter 1999 data. First Quarter 2000 data contained in this publication are subject to revision. These revisions will be reflected in the 2000 Annual Covered Employment and Earnings publication. Because of industry code changes between years, there may be substantial employment and wage shifts among industries.

INDUSTRY CLASSIFICATION

Previously published industry data will not be comparable in all instances with currently published data since industry codes have been revised according to the following Manuals: (a) manufacturing industries were coded according to the 1945 Standard Industrial Manual until December 31, 1957, while nonmanufacturing industries were coded under the Social Security Board Industrial Classification Manual (1942); (b) between January 1, 1958 and December 31, 1967, industry codes were assigned under the 1957 Standard

Industrial Classification (SIC) Manual; (c) between January 1, 1968 and December 31, 1974, industry codes were assigned under the 1967 Standard Industrial Classification (SIC) Manual; (d) between January 1, 1975 and December 31, 1987, industry codes were assigned under the 1972 Standard Industrial Classification (SIC) Manual; and (e) since January 1, 1988, industry codes have been assigned under the 1987 Standard Industrial Classification (SIC) Manual.

DEFINITION OF COVERED EMPLOYMENT AND EARNINGS

Covered Employment is the number of workers employed by employers subject to the Arkansas Employment Security Law who worked or received pay for the payroll period which includes the 12th of the month. An employer is subject to the law when he has employed one or more employees in each of ten days during the current or preceding calendar year.

Currently excluded from coverage is employment covered by the Railroad Unemployment Insurance Act; some domestic service workers; employees of small agricultural establishments; self-employed and unpaid family workers; insurance and real estate

agents who are on commission only; and employees of churches and religious organizations, except separately incorporated schools. The payroll information in this publication includes all wages and salaries paid to covered employees by their employers including bonuses, commissions, and cash values of remuneration received in any medium other than cash. These wages include both taxable and nontaxable wages. Only the first \$9,000 paid to each worker by an employer in the calendar year is taxable under the Arkansas Employment Security Law.

FEDERAL GOVERNMENT EMPLOYMENT

The table on page 53 lists the total number of civilians employed by the Federal Government in Arkansas during the First Quarter 2000. Employment and wage data are set out by industry divisions. These data are obtained from required reports submitted by various

government agencies having employment in the State. Civilian Federal workers are covered by the Unemployment Compensation for Federal Employees (UCFE) program.

COUNTY CLASSIFICATION

Employment and payroll data by county are classified according to the county where the workers are employed. Employers with operations in more than one county are requested to furnish this agency with a breakdown of employment and wages for at least one quarter of each year by the counties in which they operate. Many such employers submit county data with each regular contribution report. This information is invaluable in the preparation of monthly employment and payroll data by county. Employment and payroll data for multi-area employers who do not furnish county data each

quarter of the year are prorated by county on the basis of one quarter's information.

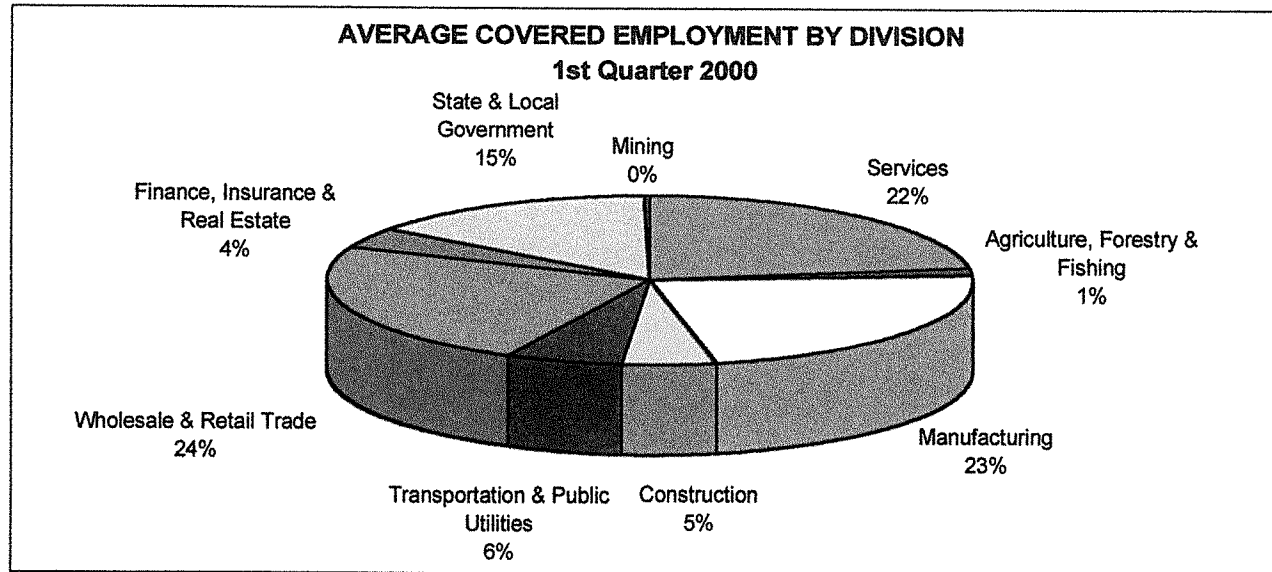
The "rest-of-state" table which appears on page 52 of this publication includes data for firms which did not provide a county breakdown of employment and payrolls. It also includes sales and other type personnel with no permanent place of work, as well as employment of employers with no established place of business in Arkansas.

SIGNIFICANT DEVELOPMENTS DURING FIRST QUARTER 2000

AVERAGE EMPLOYMENT CHANGES

Covered employment averaged 1,098,406 during the First Quarter 2000, a decrease of 14,071 from the previous quarter and 22,978 above the average recorded one year ago. Both manufacturing and nonmanufacturing industries experienced over-the-quarter

decreases of 717 and 13,355, respectively. Manufacturing industries increased by 1,066 from the average recorded one year ago and nonmanufacturing industries added 21,911.



EMPLOYMENT CHANGES FROM FOURTH QUARTER 1999

Over-the-quarter gains were recorded in eight of the published manufacturing industry groups, while eleven experienced losses. The most significant gains occurred in transportation equipment (+610), industrial machinery and equipment (+466), and fabricated metal products (+260). Notable losses were recorded in food and kindred products (-1,284), lumber and wood products (-543), and paper and allied products (-160).

All nonmanufacturing industry groups recorded over-the-quarter losses except construction (+303) and mining (+36). The most significant losses occurred in wholesale and retail trade (-6,061), services (-3,205), and transportation and public utilities (-2,262).

EMPLOYMENT CHANGES FROM FIRST QUARTER 1999

The most significant over-the-year gains in manufacturing industries occurred in transportation equipment (+1,132), fabricated metal products (+981), and printing and publishing (+542). Notable losses were recorded in food and kindred products (-1,176), apparel and other textile products (-986), and leather and leather products (-334).

Significant over-the-year gains in nonmanufacturing industry groups occurred in services (+7,933), wholesale and retail trade (+5,634), and construction (+4,054).

COVERED WAGES

Wages paid to covered workers totaled \$7,120,764,611, for the First Quarter 2000, for an average weekly wage of \$498.68. Workers in the manufacturing industries earned an average weekly wage of \$558.28. Employees in the paper and allied products industry received the highest average weekly wage (\$871.72), while workers in apparel and other textile products earned the lowest (\$304.72).

Workers in nonmanufacturing industries earned an average weekly wage of \$480.98.

Little River County employees recorded the highest average weekly wage (\$762.53) and workers in Searcy County the lowest (\$296.66).

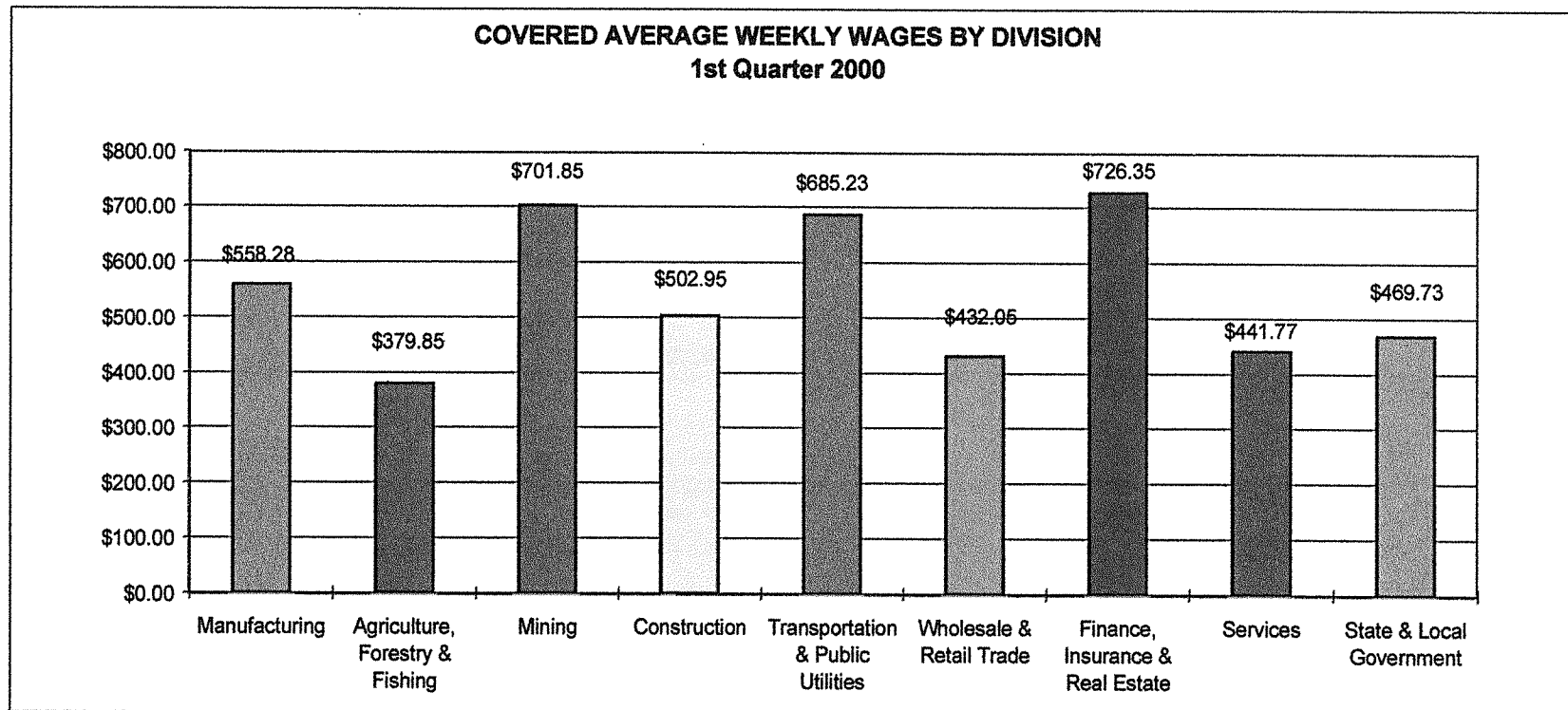


TABLE 1. QUARTERLY COMPARISON OF COVERED EMPLOYMENT AND WAGES, BY INDUSTRY

Industry Group	Number of Employing Units	Average Covered Employment		Net Change From		Total Wages Paid	
		Jan.-Mar. 2000 Monthly Average	% of Total	Oct.-Dec. 1999	Jan.-Mar. 1999	Jan.-Mar. 2000	% of Total
Total	71,103	1,098,406	100.0	-14,071	22,978	\$7,120,764,611	100.0
Manufacturing	4,391	251,447	22.9	-717	1,066	1,824,925,151	25.6
Food and Kindred Products	348	56,010	5.1	-1,284	-1,176	335,028,992	4.7
Textile Mill Products	28	4,264	0.4	-33	-12	27,285,866	0.4
Apparel & Other Textile Products	130	4,822	0.4	-112	-986	19,101,416	0.3
Lumber and Wood Products	1,151	22,452	2.0	-543	34	141,507,875	2.0
Furniture & Fixtures	139	11,372	1.0	51	-224	68,323,292	1.0
Paper and Allied Products	91	14,562	1.3	-160	-127	165,021,923	2.3
Printing and Publishing	474	11,622	1.1	166	542	78,909,009	1.1
Chemicals and Allied Products	117	6,204	0.6	107	-34	65,954,219	0.9
Petroleum and Coal Products	24	886	0.1	-13	-17	9,412,635	0.1
Rubber and Miscellaneous Plastics Products	195	14,716	1.3	-82	355	115,449,337	1.6
Leather and Leather Products	25	2,263	0.2	-93	-334	9,949,140	0.1
Stone, Clay and Glass Products	257	5,477	0.5	-153	-40	41,921,776	0.6
Primary Metal Industries	71	10,266	0.9	117	211	103,151,876	1.4
Fabricated Metal Products	375	20,457	1.9	260	981	158,371,654	2.2
Industrial Machinery & Equip.	462	19,176	1.7	466	117	140,993,471	2.0
Electronic & Other Elec. Equip.	111	19,193	1.7	-87	394	144,849,535	2.0
Transportation Equipment	177	18,143	1.7	610	1,132	137,114,797	1.9
Instruments & Related Products	60	5,314	0.5	-79	81	40,865,429	0.6
Miscellaneous Manufacturing Industries	156	4,248	0.4	145	169	21,712,909	0.3
Nonmanufacturing	66,712	846,958	77.1	-13,355	21,911	5,295,839,460	74.4
Agriculture, Forestry & Fishing	2,213	15,448	1.4	-802	523	76,283,216	1.1
Mining	317	3,263	0.3	36	192	29,774,716	0.4
Construction	6,844	51,445	4.7	303	4,054	336,365,643	4.7
Transportation & Public Utilities	4,190	64,378	5.9	-2,262	711	573,475,614	8.1
Wholesale & Retail Trade	21,752	260,739	23.7	-6,061	5,634	1,464,482,450	20.6
Finance, Insurance & Real Estate	6,037	44,014	4.0	-685	846	415,607,647	5.8
Services	22,226	246,419	22.4	-3,205	7,933	1,415,174,104	19.9
State & Local Government	3,133	161,252	14.7	-679	2,019	984,676,070	13.8
Local Government	1,988	105,445	9.6	-361	1,347	587,015,112	8.2
State Government	1,145	55,808	5.1	-317	673	397,660,958	5.6
Nonclassifiable Establishments	0	0	0.0	0	0	0	0.0

Note: Items do not necessarily add to totals because of rounding. Because of industry code changes between years, there may be substantial employment and wage shifts among industries.

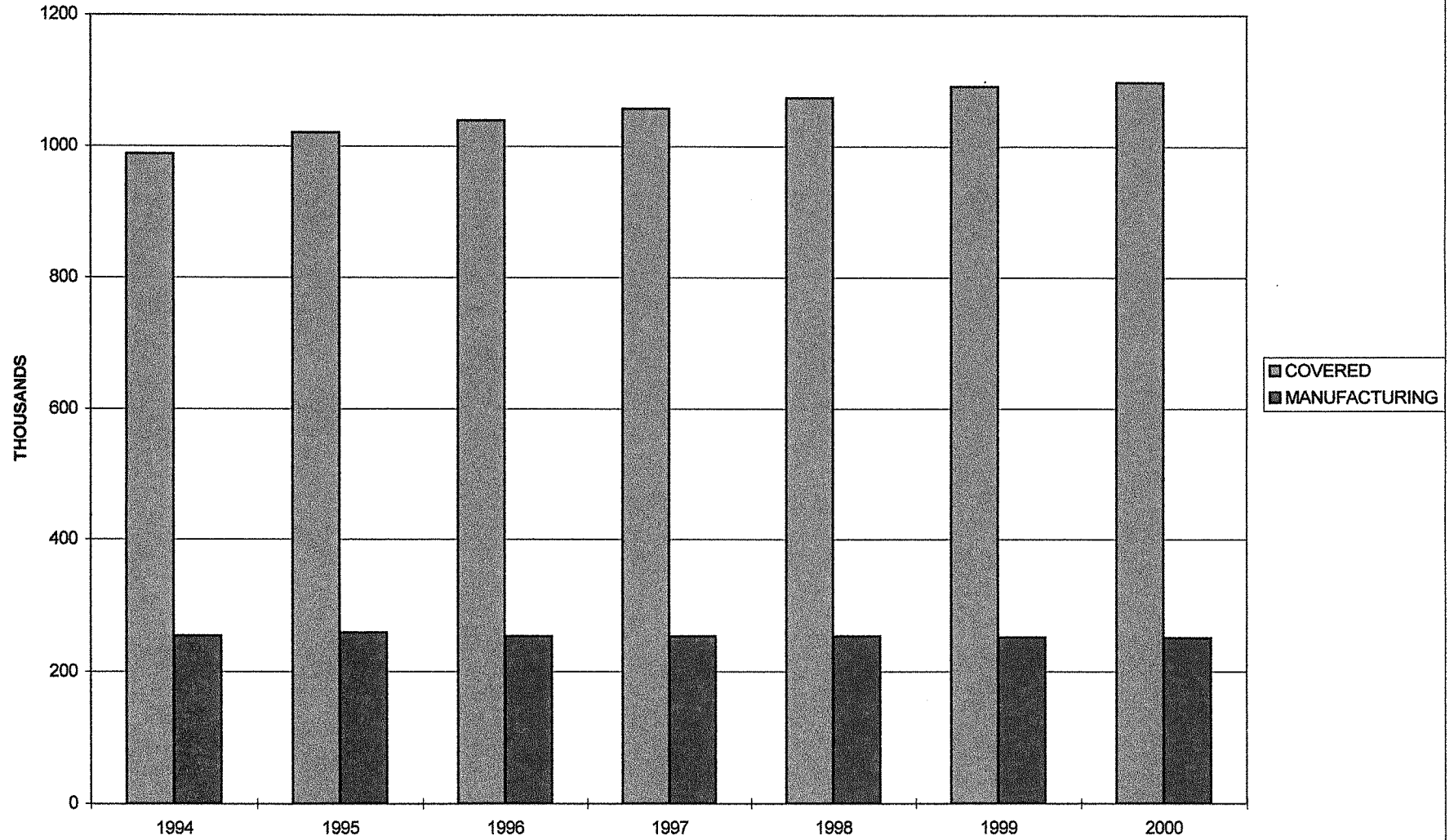
TABLE 2. TOTAL COVERED EMPLOYMENT IN ARKANSAS

Period	1994	1995	1996	1997	1998	1999	2000
Average	987,634	1,021,440	1,039,357	1,057,350	1,073,732	1,092,354	1,098,406
January	949,582	994,537	1,017,447	1,025,949	1,050,970	1,065,920	1,090,131
February	954,796	1,003,997	1,021,306	1,034,361	1,057,593	1,074,315	1,096,124
March	968,696	1,014,804	1,032,978	1,046,551	1,066,099	1,084,653	1,108,962
April	982,542	1,019,684	1,038,846	1,057,633	1,074,416	1,093,574	
May	992,205	1,025,143	1,049,419	1,067,078	1,083,133	1,098,539	
June	1,000,327	1,029,990	1,051,282	1,066,728	1,086,125	1,101,752	
July	966,045	992,336	1,009,501	1,028,510	1,046,396	1,062,574	
August	983,551	1,013,715	1,031,586	1,050,656	1,063,680	1,081,268	
September	1,015,514	1,041,492	1,055,695	1,075,759	1,088,772	1,108,220	
October	1,013,272	1,041,045	1,055,507	1,079,093	1,089,836	1,110,604	
November	1,012,367	1,039,808	1,055,247	1,076,715	1,087,855	1,112,003	
December	1,012,712	1,040,728	1,053,474	1,079,166	1,089,913	1,114,823	

TABLE 3. MANUFACTURING COVERED EMPLOYMENT

Period	1994	1995	1996	1997	1998	1999	2000
Average	253,953	258,532	253,407	252,753	253,271	251,835	251,447
January	246,018	257,416	254,998	249,199	251,864	250,018	251,115
February	245,967	258,286	253,319	250,182	252,767	250,419	251,255
March	247,221	258,236	253,815	250,608	252,860	250,571	251,972
April	250,427	258,500	253,344	251,894	253,093	250,950	
May	252,086	257,957	252,605	253,155	253,579	251,434	
June	255,254	259,922	254,470	254,829	255,655	252,938	
July	256,560	258,433	253,333	254,148	254,450	253,015	
August	257,168	259,908	253,960	254,116	254,276	252,913	
September	258,975	259,517	253,023	253,787	254,088	253,269	
October	258,959	258,301	253,014	253,367	252,386	252,014	
November	259,390	258,219	252,785	253,257	251,847	252,004	
December	259,409	257,691	252,214	254,492	252,381	252,474	

TOTAL COVERED AND MANUFACTURING EMPLOYMENT



GRAPH ONE

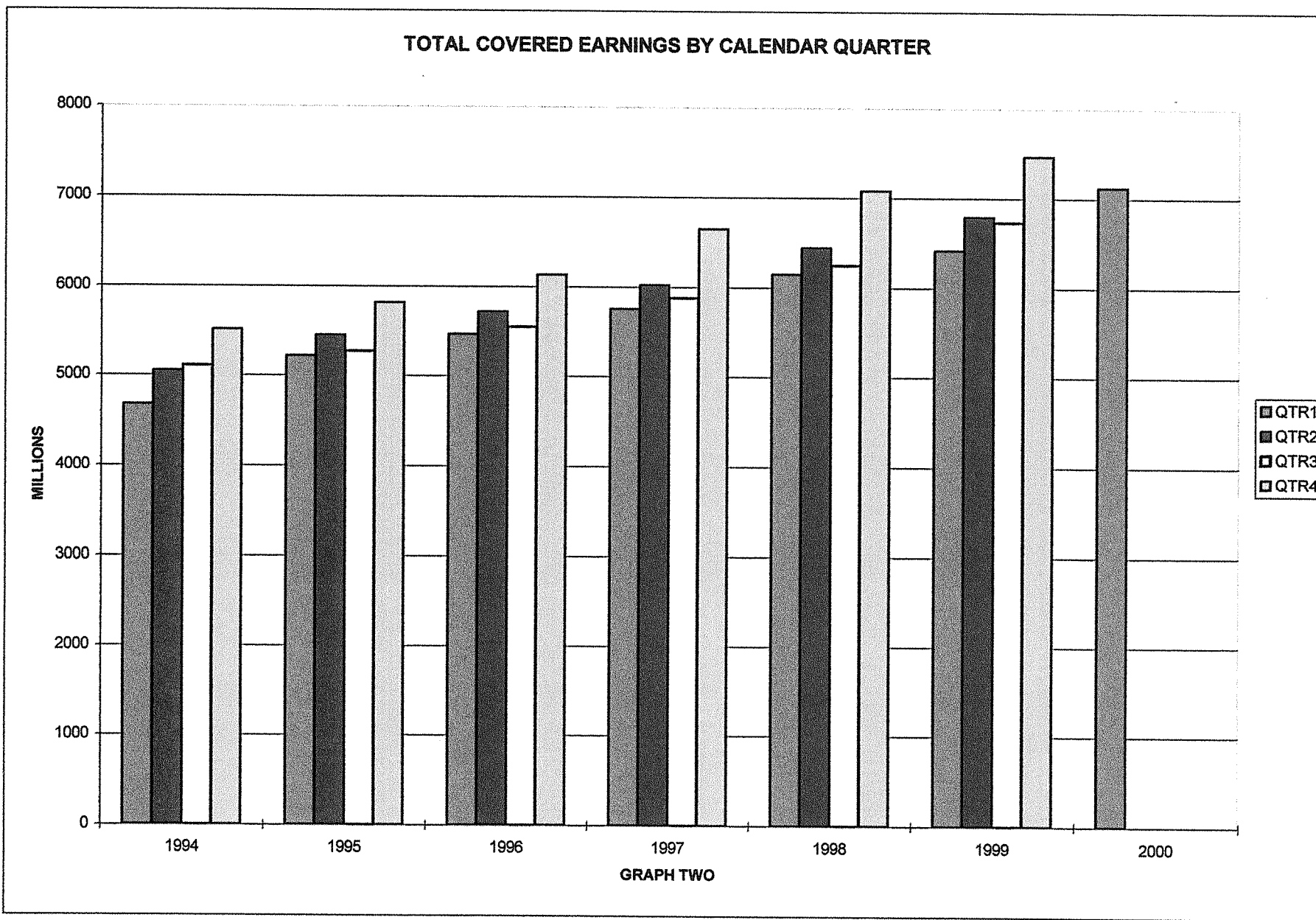


TABLE 4. TOTAL COVERED EARNINGS

Period	1994	1995	1996	1997
Total	\$20,339,457,312	\$21,755,030,337	\$22,858,110,862	\$24,296,555,335
Jan.-March	4,676,047,400	5,216,754,264	5,464,913,869	5,751,056,136
Apr.-June	5,049,632,485	5,449,448,715	5,714,811,819	6,021,537,518
July-Sept.	5,103,000,944	5,270,916,007	5,548,435,311	5,877,681,886
Oct.-Dec.	5,510,776,483	5,817,911,351	6,129,949,863	6,646,279,795
Average Weekly Earnings	396.04	409.58	422.93	441.90

TABLE 4. TOTAL COVERED EARNINGS (CONTINUED)

Period	1998	1999	2000
Total	\$25,914,345,060	\$27,407,942,374	\$7,120,764,611
Jan.-March	6,145,178,755	6,418,456,638	7,120,764,611
Apr.-June	6,441,129,069	6,791,961,159	
July-Sept.	6,246,775,598	6,733,496,511	
Oct.-Dec.	7,081,261,638	7,464,028,066	
Average Weekly Earnings	464.13	482.51	498.68

TABLE 5. TOTAL TAXABLE EARNINGS

Period	1994	1995	1996	1997
Total	\$7,425,105,759	\$7,817,421,753	\$7,993,176,348	\$8,262,066,213
Jan.-March	3,252,179,748	3,591,833,807	3,726,235,905	3,871,667,342
Apr.-June	2,080,889,209	2,141,221,185	2,176,236,591	2,223,918,770
July-Sept.	1,215,839,115	1,183,562,914	1,189,773,883	1,208,701,615
Oct.-Dec.	876,197,687	900,803,847	900,929,969	957,778,486

TABLE 5. TOTAL TAXABLE EARNINGS (CONTINUED)

Period	1998	1999	2000
Total	\$8,554,973,370	\$8,807,460,653	\$4,560,633,685
Jan.-March	4,063,795,529	4,203,067,856	4,560,633,685
Apr.-June	2,271,303,325	2,325,650,244	
July-Sept.	1,236,054,184	1,267,577,494	
Oct.-Dec.	983,820,332	1,011,165,059	

TABLE 6. COVERED EARNINGS IN MANUFACTURING

Period	1994	1995	1996	1997
Total	\$5,889,443,098	\$6,153,931,784	\$6,287,177,585	\$6,576,855,039
Jan.-March	1,361,400,241	1,511,433,659	1,541,337,684	1,580,259,292
Apr.-June	1,438,659,873	1,527,368,381	1,554,807,256	1,605,319,439
July-Sept.	1,520,885,717	1,518,447,296	1,548,044,837	1,612,928,955
Oct.-Dec.	1,568,497,267	1,596,682,448	1,642,987,808	1,778,347,353
 Average Weekly Earnings	 445.98	 457.76	 477.13	 500.40

TABLE 6. COVERED EARNINGS IN MANUFACTURING (CONTINUED)

Period	1998	1999	2000
Total	\$6,891,440,822	\$7,125,429,549	\$1,824,925,151
Jan.-March	1,641,674,535	1,654,610,660	1,824,925,151
Apr.-June	1,695,339,424	1,745,308,845	
July-Sept.	1,695,313,056	1,812,797,128	
Oct.-Dec.	1,859,113,807	1,912,712,916	
 Average Weekly Earnings	 523.26	 544.12	 558.28

**TABLE 7. STATE SUMMARY
EMPLOYMENT AND TOTAL EARNINGS, BY INDUSTRY
FIRST QUARTER 2000**

INDUSTRY GROUP		NUMBER OF EMPLOYING UNITS	EMPLOYMENT			TOTAL EARNINGS	AVERAGE WEEKLY EARNINGS
			JANUARY	FEBRUARY	MARCH	JAN.-MAR. 2000	
TOTAL, ALL INDUSTRIES		71,103	1,090,131	1,096,124	1,108,962	\$7,120,764,611	\$498.68
MANUFACTURING		4,391	251,115	251,255	251,972	\$1,824,925,151	\$558.28
20	FOOD AND KINDRED PRODUCTS	348	56,022	55,971	56,037	\$335,028,992	\$460.12
201	Meat Products	103	38,133	38,060	37,796	208,180,768	421.46
202	Dairy Products	15	562	557	661	4,555,695	590.63
203	Preserved Fruits and Vegetables	43	6,771	6,682	6,749	45,922,446	524.58
204	Grain Mill Products	95	3,642	3,656	3,667	27,473,556	578.21
205	Bakery Products	17	2,709	2,751	2,819	18,471,500	514.88
207	Fats and Oils	14	1,021	1,029	1,021	7,816,772	587.39
208	Beverages	15	971	981	1,014	6,997,651	544.45
	Other Food and Kindred Products	46	2,213	2,255	2,310	15,610,604	531.49
22	TEXTILE MILL PRODUCTS	28	4,337	4,148	4,307	\$27,285,866	\$492.24
23	APPAREL AND OTHER TEXTILE PRODUCTS	130	4,792	4,837	4,837	\$19,101,416	\$304.72
232	Men's and Boys' Furnishings	32	3,394	3,427	3,417	13,188,106	297.27
233	Women's and Misses' Outerwear	6	97	93	93	282,463	230.33
238	Miscellaneous Apparel and Accessories	4	114	115	110	582,318	396.40
239	Misc. Fabricated Textile Products	82	839	855	875	3,833,479	344.36
	Other Apparel and Other Textile Products	6	348	347	342	1,215,050	270.39
24	LUMBER AND WOOD PRODUCTS	1,151	22,368	22,412	22,575	\$141,507,875	\$484.83
241	Logging	634	3,288	3,233	3,199	17,833,325	423.39
242	Sawmills and Planing Mills	233	9,064	9,096	9,203	65,543,750	552.77
243	Millwork, Plywood & Structural Members	116	4,728	4,743	4,819	30,601,883	494.19
249	Miscellaneous Wood Products	87	3,232	3,244	3,213	17,865,773	425.52
	Other Lumber and Wood Products	81	2,056	2,096	2,141	9,663,144	354.36
25	FURNITURE AND FIXTURES	139	11,376	11,430	11,310	\$68,323,292	\$462.16
251	Household Furniture	82	5,076	5,048	4,917	26,410,445	405.21
252	Office Furniture	12	953	940	944	5,546,997	451.21
253	Public Building & Related Furniture	18	2,788	2,846	2,834	18,828,443	513.11
254	Partitions and Fixtures	21	2,386	2,426	2,446	16,214,692	515.55
259	Miscellaneous Furniture and Fixtures	6	173	170	169	1,322,715	596.18

**TABLE 7. STATE SUMMARY
EMPLOYMENT AND TOTAL EARNINGS, BY INDUSTRY
FIRST QUARTER 2000**

INDUSTRY GROUP		NUMBER OF EMPLOYING UNITS	EMPLOYMENT			TOTAL EARNINGS	AVERAGE WEEKLY EARNINGS
			JANUARY	FEBRUARY	MARCH	JAN.-MAR. 2000	
26	PAPER AND ALLIED PRODUCTS	91	14,555	14,599	14,532	\$165,021,923	\$871.72
262	Paper Mills	12	5,269	5,264	5,234	80,719,111	1181.42
267	Misc. Converted Paper Products	29	4,706	4,754	4,752	39,444,290	640.48
	Other Paper and Allied Products	50	4,580	4,581	4,546	44,858,522	755.23
27	PRINTING AND PUBLISHING	474	11,679	11,539	11,649	\$78,909,009	\$522.26
271	Newspapers	142	4,034	4,003	4,012	21,437,073	410.57
272	Periodicals	24	192	203	200	1,305,904	506.49
273	Books	17	69	65	65	419,494	486.46
274	Miscellaneous Publishing	35	1,045	1,022	1,016	8,384,328	627.59
275	Commercial Printing	231	4,086	4,103	4,143	30,987,831	579.88
	Other Printing and Publishing	25	2,253	2,143	2,213	16,374,379	571.75
28	CHEMICALS AND ALLIED PRODUCTS	117	6,178	6,210	6,225	\$65,954,219	\$817.72
281	Industrial Inorganic Chemicals	15	1,245	1,241	1,234	17,661,849	1095.65
282	Plastics Materials and Synthetics	6	326	328	319	4,159,598	986.54
283	Drugs	7	92	97	101	665,642	529.69
284	Soap, Cleaners, and Toilet Goods	25	1,245	1,233	1,222	10,674,906	665.79
285	Paints and Allied Products	7	347	345	354	3,143,768	693.58
286	Industrial Organic Chemicals	12	1,181	1,168	1,172	12,941,731	848.21
287	Agricultural Chemicals	22	922	966	983	8,695,035	698.90
289	Miscellaneous Chemical Products	23	820	832	840	8,011,690	741.91
29	PETROLEUM AND COAL PRODUCTS	24	873	894	890	\$9,412,635	\$817.52
295	Asphalt Paving and Roofing Materials	15	265	267	278	2,483,630	707.59
	Other Petroleum and Coal Products	9	608	627	612	6,929,005	865.73
30	RUBBER AND MISC. PLASTICS PRODUCTS	195	14,677	14,701	14,769	\$115,449,337	\$603.49
301	Tires and Inner Tubes	4	2,216	2,224	2,235	25,369,282	877.07
305	Hose & Belting & Gaskets & Packing	10	1,332	1,334	1,354	10,883,701	624.78
306	Fabricated Rubber Products, NEC	22	2,616	2,625	2,672	20,479,308	597.24
308	Miscellaneous Plastics Products, NEC	159	8,513	8,518	8,508	58,717,046	530.56

**TABLE 7. STATE SUMMARY
EMPLOYMENT AND TOTAL EARNINGS, BY INDUSTRY
FIRST QUARTER 2000**

INDUSTRY GROUP		NUMBER OF EMPLOYING UNITS	EMPLOYMENT			TOTAL EARNINGS	AVERAGE
			JANUARY	FEBRUARY	MARCH	JAN.-MAR. 2000	WEEKLY EARNINGS
31	LEATHER AND LEATHER PRODUCTS	25	2,359	2,224	2,207	\$9,949,140	\$338.14
314	Footwear, Except Rubber	10	1,828	1,758	1,749	7,551,845	326.66
	Other Leather and Leather Products	15	531	466	458	2,397,295	380.22
32	STONE, CLAY, AND GLASS PRODUCTS	257	5,408	5,448	5,575	\$41,921,776	\$588.78
322	Glass and Glassware, Pressed or Blown	8	489	495	557	3,511,693	525.89
323	Products Of Purchased Glass	14	294	313	317	1,442,819	360.34
325	Structural Clay Products	9	502	510	513	3,729,678	564.39
327	Concrete, Gypsum, and Plaster Products	172	2,886	2,886	2,939	21,441,779	568.03
328	Cut Stone and Stone Products	18	141	146	140	692,095	374.04
329	Misc. Nonmetallic Mineral Products	18	600	600	600	6,775,201	868.62
	Other Stone, Clay, and Glass Products	18	496	498	509	4,328,511	664.60
33	PRIMARY METAL INDUSTRIES	71	10,246	10,273	10,278	\$103,151,876	\$772.94
331	Blast Furnace and Basic Steel Products	20	4,792	4,823	4,855	54,960,381	876.51
332	Iron and Steel Foundries	9	239	245	239	1,439,281	459.39
335	Nonferrous Rolling and Drawing	20	3,070	3,056	3,055	28,869,088	725.64
336	Nonferrous Foundries (Castings)	12	1,829	1,827	1,821	15,137,611	637.81
	Other Primary Metal Industries	10	316	322	308	2,745,515	669.75
34	FABRICATED METAL PRODUCTS	375	20,368	20,434	20,568	\$158,371,654	\$595.52
342	Cutlery, Handtools, and Hardware	30	2,523	2,547	2,534	17,408,069	528.31
343	Plumbing and Heating, Except Electric	5	1,135	1,136	1,132	8,514,161	577.37
344	Fabricated Structural Metal Products	182	6,377	6,341	6,379	51,118,133	617.71
345	Screw Machine Products, Bolts, Etc.	17	490	478	477	3,740,251	597.33
346	Metal Forgings and Stampings	21	2,653	2,706	2,721	18,824,351	537.63
348	Ordnance and Accessories, NEC	14	1,695	1,700	1,697	15,920,945	721.54
349	Misc. Fabricated Metal Products	60	4,231	4,233	4,220	33,297,201	605.80
	Other Fabricated Metal Products	46	1,264	1,293	1,408	9,548,543	555.74

**TABLE 7. STATE SUMMARY
EMPLOYMENT AND TOTAL EARNINGS, BY INDUSTRY
FIRST QUARTER 2000**

INDUSTRY GROUP		NUMBER OF EMPLOYING UNITS	EMPLOYMENT			TOTAL EARNINGS	AVERAGE
			JANUARY	FEBRUARY	MARCH	JAN.-MAR. 2000	WEEKLY EARNINGS
35	INDUSTRIAL MACHINERY AND EQUIPMENT	462	19,165	19,185	19,179	\$140,993,471	\$565.57
353	Construction and Related Machinery	35	2,526	2,551	2,540	19,478,273	590.13
354	Metalworking Machinery	102	3,404	3,362	3,339	24,881,676	568.23
355	Special Industrial Machinery	29	1,070	1,071	1,073	9,862,928	708.17
356	General Industrial Machinery	26	2,270	2,324	2,335	16,161,240	538.25
358	Refrigeration and Service Machinery	40	5,349	5,350	5,370	43,525,496	625.08
359	Industrial Machinery, NEC	187	1,534	1,521	1,553	9,801,997	490.89
	Other Industrial Machinery and Equipment	43	3,012	3,006	2,969	17,281,861	443.77
36	ELECTRONIC & OTHER ELECTRIC EQUIPMENT	111	19,285	19,263	19,032	\$144,849,535	\$580.53
361	Electric Distribution Equipment	8	1,228	1,208	1,205	8,086,654	512.54
362	Electrical Industrial Apparatus	22	6,060	5,962	5,960	46,567,667	597.62
364	Electric Lighting and Wiring Equipment	23	2,592	2,573	2,602	19,190,730	570.19
365	Household Audio and Video Equipment	11	1,141	1,142	1,036	7,725,622	537.16
367	Electronic Components and Accessories	27	1,963	1,991	2,013	13,088,695	506.20
	Other Electronic & Other Electric Equipment	20	6,301	6,387	6,216	50,190,167	612.69
37	TRANSPORTATION EQUIPMENT	177	17,824	18,194	18,412	\$137,114,797	\$581.33
371	Motor Vehicles and Equipment	73	9,688	9,841	9,906	70,271,304	550.92
372	Aircraft and Parts	29	4,522	4,594	4,709	42,903,035	716.14
373	Ship and Boat Building And Repairing	37	1,878	1,943	1,956	11,171,723	446.27
379	Miscellaneous Transportation Equipment	28	611	659	668	4,030,373	479.92
	Other Transportation Equipment	10	1,125	1,157	1,173	8,738,362	583.66
38	INSTRUMENTS AND RELATED PRODUCTS	60	5,321	5,304	5,318	\$40,865,429	\$591.51
381	Search and Navigation Equipment	7	356	363	373	2,793,342	590.31
382	Measuring and Controlling Devices	17	1,653	1,598	1,600	9,514,198	452.60
	Other Instruments and Related Products	36	3,312	3,343	3,345	28,557,889	659.03

TABLE 7. STATE SUMMARY
EMPLOYMENT AND TOTAL EARNINGS, BY INDUSTRY
FIRST QUARTER 2000

INDUSTRY GROUP		NUMBER OF EMPLOYING UNITS	EMPLOYMENT			TOTAL EARNINGS	AVERAGE
			JANUARY	FEBRUARY	MARCH	JAN.-MAR. 2000	WEEKLY EARNINGS
39	MISCELLANEOUS MANUFACTURING INDUSTRIES	156	4,282	4,189	4,272	\$21,712,909	\$393.21
393	Musical Instruments	9	856	854	853	4,716,027	424.63
394	Toys and Sporting Goods	46	1,447	1,462	1,516	7,262,791	378.76
395	Pens, Pencils, Office, & Art Supplies	7	30	32	32	131,273	322.27
399	Miscellaneous Manufactures	89	1,945	1,837	1,867	9,590,102	391.77
	Other Miscellaneous Manufacturing Industries	5	4	4	4	12,716	244.54

**TABLE 7. STATE SUMMARY
EMPLOYMENT AND TOTAL EARNINGS, BY INDUSTRY
FIRST QUARTER 2000**

INDUSTRY GROUP	NUMBER OF EMPLOYING UNITS	EMPLOYMENT			TOTAL EARNINGS	AVERAGE WEEKLY EARNINGS	
		JANUARY	FEBRUARY	MARCH	JAN.-MAR. 2000		
NONMANUFACTURING	66,712	839,016	844,869	856,990	\$5,295,839,460	\$480.98	
AGRICULTURE, FORESTRY, AND FISHING	2,213	14,992	15,285	16,067	\$76,283,216	\$379.85	
01	AGRICULTURAL PRODUCTION-CROPS	704	2,981	3,088	3,610	\$13,720,245	\$327.12
011	Cash Grains	374	1,330	1,359	1,595	6,181,080	332.96
013	Field Crops, Except Cash Grains	123	657	683	769	2,543,737	278.34
018	Horticultural Specialties	44	328	377	470	1,356,121	266.34
019	General Farms, Primarily Crop	143	583	585	670	3,022,751	379.52
	Other Agricultural Production-Crops	20	83	84	106	616,556	521.18
02	AGRICULTURAL PRODUCTION-LIVESTOCK	227	3,802	3,805	3,909	\$22,464,589	\$450.17
021	Livestock, Except Dairy and Poultry	74	650	650	665	3,740,459	439.28
025	Poultry and Eggs	85	2,518	2,488	2,490	15,319,843	471.63
027	Animal Specialties	55	529	562	634	2,859,879	382.59
	Other Agricultural Production-Livestock	13	105	105	120	544,408	380.70
07	AGRICULTURAL SERVICES	1,149	6,232	6,350	6,739	\$29,871,135	\$356.78
071	Soil Preparation Services	7	29	30	33	195,260	489.78
072	Crop Services	294	1,083	1,156	1,372	7,026,348	449.03
074	Veterinary Services	285	1,670	1,682	1,705	6,456,954	294.65
075	Animal Services, Except Veterinary	127	1,019	1,042	1,029	4,289,771	320.37
076	Farm Labor and Management Services	18	42	37	39	338,605	662.20
078	Landscape and Horticultural Services	418	2,389	2,403	2,561	11,564,197	362.93
08	FORESTRY	123	1,916	1,999	1,766	\$10,071,244	\$409.11
085	Forestry Services	78	1,611	1,693	1,458	7,484,337	362.70
	Other Forestry	45	305	306	308	2,586,907	649.60
09	FISHING, HUNTING, AND TRAPPING	10	61	43	43	\$156,003	\$244.90

**TABLE 7. STATE SUMMARY
EMPLOYMENT AND TOTAL EARNINGS, BY INDUSTRY
FIRST QUARTER 2000**

INDUSTRY GROUP		NUMBER OF EMPLOYING UNITS	EMPLOYMENT			TOTAL EARNINGS	AVERAGE WEEKLY EARNINGS
			JANUARY	FEBRUARY	MARCH	JAN.-MAR. 2000	
MINING		317	3,271	3,243	3,276	\$29,774,716	\$701.85
13	OIL AND GAS EXTRACTION	221	1,591	1,570	1,583	\$16,141,699	\$785.20
138	Oil and Gas Field Services	132	1,078	1,045	1,060	8,686,009	629.74
	Other Oil and Gas Extraction	89	513	525	523	7,455,690	1102.21
14	NONMETALLIC MINERALS, EXCEPT FUELS	92	1,574	1,567	1,584	\$12,438,486	\$607.50
142	Crushed and Broken Stone	19	300	292	302	2,168,107	559.66
144	Sand and Gravel	53	1,009	1,013	1,024	8,159,790	618.20
149	Miscellaneous Nonmetallic Minerals, Except Fuels	13	149	147	150	1,103,493	570.97
	Other Nonmetallic Minerals, Except Fuels	7	116	115	108	1,007,096	685.57
	OTHER MINING	4	106	106	109	\$1,194,531	\$858.76
CONSTRUCTION		6,844	50,369	50,863	53,103	\$336,365,643	\$502.95
15	GENERAL BUILDING CONTRACTORS	1,853	13,166	13,253	13,638	\$88,850,045	\$511.87
152	Residential Building Construction	1,262	4,071	4,110	4,256	22,648,761	420.25
153	Operative Builders	24	457	483	504	3,232,742	516.63
154	Nonresidential Building Construction	567	8,638	8,660	8,878	62,968,542	555.13
16	HEAVY CONSTRUCTION, EX. BUILDING	776	8,731	8,961	9,532	\$62,185,080	\$527.12
161	Highway and Street Construction	169	2,738	2,683	2,873	19,628,306	546.13
162	Heavy Construction, Except Highway	607	5,993	6,278	6,659	42,556,774	518.80
17	SPECIAL TRADE CONTRACTORS	4,215	28,472	28,649	29,933	\$185,330,518	\$491.29
171	Plumbing, Heating, Air-Conditioning	1,047	7,478	7,449	7,554	50,779,617	521.26
172	Painting and Paper Hanging	272	1,482	1,484	1,546	7,610,032	389.22
173	Electrical Work	739	5,425	5,563	5,799	39,209,383	539.01
174	Masonry, Stonework, and Plastering	472	3,442	3,515	3,702	19,827,982	429.28
175	Carpentry and Floor Work	225	937	949	998	5,404,541	432.46
176	Roofing, Siding, and Sheet Metal Work	261	1,826	1,839	1,866	10,751,840	448.60
177	Concrete Work	249	1,487	1,489	1,597	7,563,511	381.68
178	Water Well Drilling	56	343	352	388	2,674,996	570.00
179	Misc. Special Trade Contractors	894	6,052	6,009	6,483	41,508,616	516.55

**TABLE 7. STATE SUMMARY
EMPLOYMENT AND TOTAL EARNINGS, BY INDUSTRY
FIRST QUARTER 2000**

INDUSTRY GROUP		NUMBER OF EMPLOYING UNITS	EMPLOYMENT			TOTAL EARNINGS	AVERAGE WEEKLY EARNINGS
			JANUARY	FEBRUARY	MARCH	JAN.-MAR. 2000	
TRANSPORTATION AND PUBLIC UTILITIES		4,190	64,377	64,111	64,646	\$573,475,614	\$685.23
41	LOCAL AND INTERURBAN PASSENGER TRANSIT	134	1,909	1,915	1,969	\$8,849,795	\$352.54
411	Local and Suburban Transportation	96	1,274	1,282	1,313	6,170,245	368.03
414	Bus Charter Service	15	143	145	164	596,634	304.61
	Other Local and Interurban Passenger Transit	23	492	488	492	2,082,916	326.54
42	TRUCKING AND WAREHOUSING	2,391	33,815	33,392	33,818	\$261,561,487	\$597.48
421	Trucking & Courier Services, Ex. Air	2,160	31,736	31,326	31,703	249,447,689	607.45
	Other Trucking and Warehousing	231	2,079	2,066	2,115	12,113,798	446.56
44	WATER TRANSPORTATION	62	749	749	788	\$5,287,071	\$533.72
449	Water Transportation Services	57	686	680	718	4,796,259	531.11
	Other Water Transportation	5	63	69	70	490,812	560.71
45	TRANSPORTATION BY AIR	194	6,199	6,191	6,179	\$43,031,452	\$534.78
451	Air Transportation, Scheduled	67	4,365	4,322	4,299	27,483,899	488.41
	Other Transportation by Air	127	1,834	1,869	1,880	15,547,553	642.65
46	PIPELINES, EXCEPT NATURAL GAS	16	212	220	216	\$2,893,316	\$1,030.38
47	TRANSPORTATION SERVICES	302	2,124	2,134	2,094	\$14,769,633	\$536.58
472	Passenger Transportation Arrangement	110	522	531	524	2,782,036	407.11
473	Freight Transportation Arrangement	146	839	843	832	7,007,571	643.25
	Other Transportation Services	46	763	760	738	4,980,026	508.29
48	COMMUNICATIONS	622	10,661	10,826	10,888	\$120,068,754	\$855.85
481	Telephone Communications	388	7,337	7,470	7,528	96,558,171	997.66
483	Radio and Television Broadcasting	142	2,227	2,241	2,242	15,372,987	528.71
	Other Communications	92	1,097	1,115	1,118	8,137,596	563.94
49	ELECTRIC, GAS, AND SANITARY SERVICES	469	8,708	8,684	8,694	\$117,014,106	\$1,035.16
492	Gas Production and Distribution	100	1,600	1,598	1,600	19,104,466	918.87
494	Water Supply	153	653	650	644	3,369,178	399.33
	Other Electric, Gas, and Sanitary Services	216	6,455	6,436	6,450	94,540,462	1128.02

**TABLE 7. STATE SUMMARY
EMPLOYMENT AND TOTAL EARNINGS, BY INDUSTRY
FIRST QUARTER 2000**

INDUSTRY GROUP	NUMBER OF EMPLOYING UNITS	EMPLOYMENT			TOTAL EARNINGS	AVERAGE	
		JANUARY	FEBRUARY	MARCH	JAN.-MAR. 2000	WEEKLY EARNINGS	
WHOLESALE AND RETAIL TRADE	21,752	258,712	259,879	263,625	\$1,464,482,450	\$432.05	
WHOLESALE TRADE	6,294	51,280	51,560	52,415	\$439,722,616	\$653.60	
50	WHOLESALE TRADE-DURABLE GOODS	3,776	27,006	27,118	27,491	\$234,932,122	\$664.28
501	Motor Vehicles, Parts, and Supplies	536	4,609	4,654	4,660	32,097,818	532.01
502	Furniture and Homefurnishings	129	604	601	622	5,678,369	717.24
503	Lumber and Construction Materials	272	2,148	2,153	2,232	17,590,666	621.37
504	Professional & Commercial Equipment	652	3,550	3,569	3,616	42,058,768	904.13
505	Metals and Minerals, Except Petroleum	86	910	909	924	8,252,523	694.29
506	Electrical Goods	326	2,374	2,401	2,400	27,386,004	880.81
507	Hardware, Plumbing & Heating Equipment	313	2,562	2,552	2,594	22,443,197	671.93
508	Machinery, Equipment, and Supplies	1,134	8,433	8,468	8,577	67,113,285	607.88
509	Miscellaneous Durable Goods	328	1,816	1,811	1,866	12,311,492	517.22
51	WHOLESALE TRADE-NONDURABLE GOODS	2,518	24,274	24,442	24,924	\$204,790,494	\$641.76
511	Paper and Paper Products	194	2,357	2,395	2,406	18,111,000	583.89
512	Drugs, Proprietarys, and Sundries	216	2,372	2,363	2,359	29,142,119	948.00
513	Apparel, Piece Goods, and Notions	126	1,048	1,037	1,040	6,691,645	494.15
514	Groceries and Related Products	637	7,545	7,550	7,657	67,055,844	680.13
515	Farm-Product Raw Materials	116	1,374	1,368	1,377	6,808,588	381.45
516	Chemical and Allied Products	214	1,070	1,077	1,091	14,245,603	1015.27
517	Petroleum and Petroleum Products	235	1,918	1,908	1,949	14,751,568	589.47
518	Beer, Wine, and Distilled Beverages	47	1,044	1,051	1,075	9,397,624	684.13
519	Misc. Nondurable Goods	733	5,546	5,693	5,970	38,586,503	517.44
	RETAIL TRADE	15,458	207,432	208,319	211,210	\$1,024,759,834	\$377.19
52	BUILDING MATERIALS & GARDEN SUPPLIES	823	8,427	8,552	8,950	\$48,238,169	\$429.32
521	Lumber and Other Building Materials	282	5,284	5,331	5,553	30,478,024	435.02
523	Paint, Glass, and Wallpaper Stores	123	561	565	565	3,902,244	532.54
525	Hardware Stores	170	1,228	1,219	1,232	5,410,761	339.40
526	Retail Nurseries and Garden Stores	113	466	535	674	1,980,388	272.84
527	Mobile Home Dealers	135	888	902	926	6,466,752	549.46

**TABLE 7. STATE SUMMARY
EMPLOYMENT AND TOTAL EARNINGS, BY INDUSTRY
FIRST QUARTER 2000**

INDUSTRY GROUP		NUMBER OF EMPLOYING UNITS	EMPLOYMENT			TOTAL EARNINGS	AVERAGE WEEKLY EARNINGS
			JANUARY	FEBRUARY	MARCH	JAN.-MAR. 2000	
53	GENERAL MERCHANDISE STORES	629	49,365	49,073	49,230	\$452,739,111	\$707.52
531	Department Stores	168	44,508	44,289	44,465	437,228,044	757.15
533	Variety Stores	239	3,072	3,060	3,006	10,745,442	271.36
539	Misc. General Merchandise Stores	222	1,785	1,724	1,759	4,765,625	208.76
54	FOOD STORES	2,079	29,646	29,916	29,979	\$98,962,872	\$255.05
541	Grocery Stores	1,775	28,153	28,383	28,385	94,366,920	256.44
542	Meat and Fish Markets	56	205	201	218	626,278	231.61
544	Candy, Nut, and Confectionery Stores	22	99	102	108	214,448	160.16
546	Retail Bakeries	121	663	688	706	1,924,551	215.91
549	Miscellaneous Food Stores	93	490	511	534	1,745,367	262.40
	Other Food Stores	12	36	31	28	85,308	207.23
55	AUTOMOTIVE DEALERS & SERVICE STATIONS	2,466	23,210	23,327	23,687	\$136,056,747	\$447.11
551	New and Used Car Dealers	305	8,642	8,743	8,798	70,983,909	625.63
552	Used Car Dealers	421	1,577	1,608	1,666	9,638,296	458.51
553	Auto and Home Supply Stores	611	3,904	3,928	4,025	21,639,608	421.17
554	Gasoline Service Stations	956	7,907	7,841	7,950	26,494,388	258.00
555	Boat Dealers	70	391	396	412	2,159,126	415.56
556	Recreational Vehicle Dealers	39	267	277	294	1,652,520	455.07
557	Motorcycle Dealers	51	456	463	473	3,102,607	514.36
559	Automotive Dealers, NEC	13	66	71	69	386,293	432.74
56	APPAREL AND ACCESSORY STORES	981	7,717	7,755	7,701	\$21,542,879	\$214.54
561	Men's & Boys' Clothing Stores	52	282	270	265	1,393,757	393.68
562	Women's Clothing Stores	284	1,933	1,879	1,938	5,494,273	220.51
563	Women's Accessory & Specialty Stores	49	327	321	332	771,586	181.69
564	Children's and Infants' Wear Stores	54	238	231	240	593,416	193.15
565	Family Clothing Stores	240	3,321	3,454	3,282	8,233,360	188.92
566	Shoe Stores	216	1,306	1,287	1,318	4,009,820	236.60
569	Misc. Apparel & Accessory Stores	86	310	313	326	1,046,667	254.52
57	FURNITURE AND HOMEFURNISHINGS STORES	1,257	7,789	7,824	7,882	\$40,093,450	\$393.80
571	Furniture and Homefurnishings Stores	743	4,293	4,314	4,349	22,651,995	403.47
572	Household Appliance Stores	120	544	548	558	2,352,688	329.05
573	Radio, Television, & Computer Stores	394	2,952	2,962	2,975	15,088,767	391.72

**TABLE 7. STATE SUMMARY
EMPLOYMENT AND TOTAL EARNINGS, BY INDUSTRY
FIRST QUARTER 2000**

INDUSTRY GROUP	NUMBER OF EMPLOYING UNITS	EMPLOYMENT			TOTAL EARNINGS	AVERAGE WEEKLY EARNINGS	
		JANUARY	FEBRUARY	MARCH	JAN.-MAR. 2000		
58	EATING AND DRINKING PLACES	3,880	61,936	62,582	64,514	\$146,092,232	\$178.35
59	MISCELLANEOUS RETAIL	3,343	19,342	19,290	19,267	\$81,034,374	\$322.98
591	Drug Stores and Proprietary Stores	499	4,256	4,273	4,299	23,491,461	422.60
592	Liquor Stores	349	1,429	1,420	1,435	4,586,629	247.07
593	Used Merchandise Stores	326	1,021	1,029	1,012	3,667,375	276.39
594	Miscellaneous Shopping Goods Stores	1,027	6,582	6,299	6,311	22,287,083	267.99
596	Nonstore Retailers	165	1,666	1,681	1,704	9,329,910	426.26
598	Fuel Dealers	166	990	986	966	5,808,755	455.64
599	Retail Stores, NEC	811	3,398	3,602	3,540	11,863,161	259.74
FINANCE, INSURANCE, AND REAL ESTATE		6,037	43,959	43,950	44,134	\$415,607,647	\$726.35
60	DEPOSITORY INSTITUTIONS	1,184	17,867	17,862	17,866	\$131,040,027	\$564.23
602	Commercial Banks	868	15,183	15,163	15,172	114,247,405	579.22
603	Savings Institutions	105	1,557	1,565	1,557	10,241,775	505.13
606	Credit Unions	84	541	532	534	3,293,690	472.98
	Other Depository Institutions	127	586	602	603	3,257,157	419.68
61	NONDEPOSITORY INSTITUTIONS	269	2,076	2,076	2,070	\$20,951,130	\$777.06
611	Federal & Fed.-Sponsored Credit	25	181	179	180	2,411,763	1030.67
614	Personal Credit Institutions	44	265	272	267	4,173,233	1197.83
615	Business Credit Institutions	55	336	333	345	3,849,481	876.08
616	Mortgage Bankers and Brokers	145	1,294	1,292	1,278	10,516,653	628.08
62	SECURITY AND COMMODITY BROKERS	393	2,575	2,605	2,626	\$80,902,077	\$2,391.71
621	Security Brokers and Dealers	242	2,263	2,280	2,291	77,389,103	2613.26
	Other Security and Commodity Brokers	151	312	325	335	3,512,974	834.04
63	INSURANCE CARRIERS	409	5,548	5,522	5,516	\$63,402,692	\$882.15
631	Life Insurance	61	747	743	763	8,020,542	821.52
632	Medical Service and Health Insurance	44	2,227	2,228	2,199	29,795,585	1033.35
633	Fire, Marine, and Casualty Insurance	204	1,894	1,890	1,898	20,946,282	850.71
635	Surety Insurance	22	42	43	45	606,451	1076.54
636	Title Insurance	63	580	557	549	3,390,962	464.13
	Other Insurance Carriers	15	58	61	62	642,870	819.64

**TABLE 7. STATE SUMMARY
EMPLOYMENT AND TOTAL EARNINGS, BY INDUSTRY
FIRST QUARTER 2000**

INDUSTRY GROUP	NUMBER OF EMPLOYING UNITS	EMPLOYMENT			TOTAL EARNINGS	AVERAGE WEEKLY EARNINGS	
		JANUARY	FEBRUARY	MARCH	JAN.-MAR. 2000		
64	INSURANCE AGENTS, BROKERS & SERVICE	1,443	5,292	5,300	5,367	\$43,212,991	\$624.87
65	REAL ESTATE	2,147	9,598	9,604	9,704	\$50,029,553	\$399.41
651	Real Estate Operators and Lessors	712	3,357	3,302	3,329	14,038,357	324.35
653	Real Estate Agents and Managers	1,121	4,497	4,543	4,604	25,117,333	424.82
654	Title Abstract Offices	112	777	782	777	4,374,671	432.17
655	Subdividers and Developers	202	967	977	994	6,499,192	510.49
67	HOLDING AND OTHER INVESTMENT OFFICES	192	1,003	981	985	\$26,069,177	\$2,026.26
671	Holding Offices	68	577	564	569	22,101,796	2982.70
679	Miscellaneous Investing	72	312	310	306	3,017,460	750.36
	Other Holding and Other Investment Offices	52	114	107	110	949,921	662.27
SERVICES		22,226	243,301	245,987	249,968	\$1,415,174,104	\$441.77
70	HOTELS AND OTHER LODGING PLACES	730	9,760	10,051	10,672	\$28,430,698	\$215.23
701	Hotels and Motels	662	9,547	9,825	10,416	27,717,224	214.73
702	Rooming and Boarding Houses	9	30	31	34	108,780	264.24
703	Camps and Recreational Vehicle Parks	45	136	147	166	428,589	220.28
704	Membership-Basis Organization Hotels	14	47	48	56	176,105	269.14
72	PERSONAL SERVICES	1,572	9,335	9,659	9,544	\$36,896,894	\$298.36
721	Laundry, Cleaning, & Garment Services	459	4,057	4,026	4,055	15,570,638	296.03
722	Photographic Studios, Portrait	150	477	495	486	1,792,041	283.64
723	Beauty Shops	424	1,461	1,489	1,521	5,399,633	278.70
724	Barber Shops	25	45	45	49	225,314	374.07
725	Shoe Repair and Shoeshine Parlors	12	14	14	21	36,442	171.63
726	Funeral Service and Crematories	202	1,538	1,535	1,551	8,770,040	437.68
729	Miscellaneous Personal Services	300	1,743	2,055	1,861	5,102,786	208.09

**TABLE 7. STATE SUMMARY
EMPLOYMENT AND TOTAL EARNINGS, BY INDUSTRY
FIRST QUARTER 2000**

INDUSTRY GROUP	NUMBER OF EMPLOYING UNITS	EMPLOYMENT			TOTAL EARNINGS	AVERAGE WEEKLY EARNINGS
		JANUARY	FEBRUARY	MARCH	JAN.-MAR. 2000	
73 BUSINESS SERVICES	3,558	56,652	57,338	59,219	\$297,993,861	\$397.02
731 Advertising	181	1,391	1,407	1,409	11,011,016	603.99
732 Credit Reporting and Collection	93	849	846	840	5,000,904	455.25
733 Mailing, Reproduction, Stenographic	192	1,107	1,101	1,104	5,517,586	384.45
734 Services to Buildings	591	6,769	6,697	6,723	21,409,575	244.72
735 Misc. Equipment Rental & Leasing	413	2,436	2,438	2,492	16,179,497	506.89
736 Personnel Supply Services	505	25,723	26,205	27,900	83,631,485	241.76
737 Computer and Data Processing Services	741	8,098	8,159	8,202	112,795,018	1064.21
738 Miscellaneous Business Services	842	10,279	10,485	10,549	42,448,780	312.84
75 AUTO REPAIR, SERVICES, AND PARKING	1,843	8,602	8,689	8,831	\$46,428,393	\$410.16
751 Automotive Rentals, No Drivers	135	1,110	1,136	1,138	6,667,255	454.67
752 Automobile Parking	12	67	70	67	257,031	290.76
753 Automotive Repair Shops	1,400	5,506	5,505	5,584	32,534,302	452.42
754 Automotive Services, Except Repair	296	1,919	1,978	2,042	6,969,805	270.82
76 MISCELLANEOUS REPAIR SERVICES	673	3,176	3,177	3,254	\$22,149,020	\$532.04
762 Electrical Repair Shops	172	1,233	1,243	1,247	9,064,917	561.89
763 Watch, Clock, and Jewelry Repair	6	16	14	15	74,252	380.78
764 Reupholstery and Furniture Repair	41	121	117	123	433,591	277.17
769 Miscellaneous Repair Shops	454	1,806	1,803	1,869	12,576,260	529.79
78 MOTION PICTURES	350	3,338	3,291	3,317	\$11,678,429	\$270.97
783 Motion Picture Theaters	59	844	785	791	1,455,107	138.76
784 Video Tape Rental	224	1,480	1,468	1,466	3,465,395	181.18
Other Motion Pictures	67	1,014	1,038	1,060	6,757,927	501.13
79 AMUSEMENT & RECREATION SERVICES	847	7,394	8,071	8,536	\$24,973,287	\$240.12
791 Dance Studios, Schools, and Halls	42	158	158	155	278,201	136.31
792 Producers, Orchestras, Entertainers	61	529	522	591	2,045,316	287.45
793 Bowling Centers	43	440	443	457	1,234,237	212.56
794 Commercial Sports	68	806	1,371	1,384	4,400,398	285.17
799 Misc. Amusement, Recreation Services	633	5,461	5,577	5,949	17,015,135	231.15

**TABLE 7. STATE SUMMARY
EMPLOYMENT AND TOTAL EARNINGS, BY INDUSTRY
FIRST QUARTER 2000**

INDUSTRY GROUP		NUMBER OF EMPLOYING UNITS	EMPLOYMENT			TOTAL EARNINGS	AVERAGE WEEKLY EARNINGS
			JANUARY	FEBRUARY	MARCH	JAN.-MAR. 2000	
80	HEALTH SERVICES	4,438	93,708	93,740	94,101	\$673,585,099	\$552.10
	801 Offices & Clinics of Medical Doctors	1,827	17,225	17,228	17,334	201,551,118	898.14
	802 Offices And Clinics of Dentists	881	5,013	5,012	5,046	34,434,641	527.27
	803 Offices of Osteopathic Physicians	23	113	113	117	940,655	632.87
	804 Offices of Other Health Practitioners	900	4,001	4,025	4,071	25,125,937	479.32
	805 Nursing and Personal Care Facilities	272	20,158	20,108	20,221	86,299,756	329.25
	806 Hospitals	104	39,213	39,274	39,311	277,116,189	542.88
	807 Medical and Dental Laboratories	119	964	971	994	7,040,841	554.73
	808 Home Health Care Services	125	3,625	3,622	3,620	19,003,014	403.54
	809 Health and Allied Services, NEC	187	3,396	3,387	3,387	22,072,948	500.86
81	LEGAL SERVICES	1,356	4,781	4,774	4,770	\$40,999,933	\$660.49
82	EDUCATIONAL SERVICES	289	6,517	6,775	6,778	\$34,629,865	\$398.18
	821 Elementary and Secondary Schools	79	2,971	3,011	3,033	12,177,676	311.73
	822 Colleges and Universities	27	2,737	2,929	2,884	17,476,896	471.71
	823 Libraries	9	62	62	63	203,823	251.53
	824 Vocational Schools	49	177	184	192	1,097,008	457.79
	829 Schools & Educational Services, NEC	125	570	589	606	3,674,462	480.43
83	SOCIAL SERVICES	2,022	22,119	22,248	22,489	\$78,112,868	\$269.62
	832 Individual and Family Services	782	7,208	7,201	7,242	26,818,324	285.85
	833 Job Training and Related Services	117	2,882	2,894	2,947	10,891,514	288.14
	835 Child Day Care Services	801	7,043	7,170	7,234	19,980,119	214.99
	836 Residential Care	204	3,388	3,342	3,412	13,219,498	300.79
	839 Social Services, NEC	118	1,598	1,641	1,654	7,203,413	339.74
84	MUSEUMS, BOTANICAL, ZOOLOGICAL GARDENS	34	173	168	174	\$614,688	\$275.44
86	MEMBERSHIP ORGANIZATIONS	797	3,831	3,910	3,972	\$16,612,529	\$327.30
	861 Business Associations	185	548	545	554	4,142,014	580.36
	862 Professional Organizations	43	251	253	253	2,263,450	690.01
	863 Labor Organizations	149	727	781	824	1,942,060	192.18
	864 Civic and Social Associations	251	1,581	1,610	1,615	4,687,884	225.10
	865 Political Organizations	17	26	26	28	149,402	430.97
	866 Religious Organizations	33	148	155	156	507,384	255.10
	869 Membership Organizations, NEC	119	550	540	542	2,920,335	412.94

**TABLE 7. STATE SUMMARY
EMPLOYMENT AND TOTAL EARNINGS, BY INDUSTRY
FIRST QUARTER 2000**

	INDUSTRY GROUP	NUMBER OF EMPLOYING UNITS	EMPLOYMENT			TOTAL EARNINGS	AVERAGE WEEKLY EARNINGS
			JANUARY	FEBRUARY	MARCH	JAN.-MAR. 2000	
87	ENGINEERING & MANAGEMENT SERVICES	2,360	11,865	12,072	12,281	\$95,484,506	\$608.40
	871 Engineering & Architectural Services	571	3,911	3,884	3,958	33,393,088	655.67
	872 Accounting, Auditing, & Bookkeeping	819	3,686	3,814	3,838	25,723,328	523.56
	873 Research and Testing Services	141	1,429	1,497	1,539	10,987,068	567.86
	874 Management and Public Relations	829	2,839	2,877	2,946	25,381,022	676.19
88	PRIVATE HOUSEHOLDS	1,314	1,894	1,875	1,883	\$5,545,638	\$226.43
89	SERVICES, NEC	43	156	149	147	\$1,038,396	\$530.15
	LOCAL GOVERNMENT	1,988	104,868	105,497	105,969	\$587,015,112	\$428.23
	STATE GOVERNMENT	1,145	55,167	56,054	56,202	\$397,660,958	\$548.12
	NONCLASSIFIABLE ESTABLISHMENTS	0	0	0	0	\$0	

**TABLE 8. COUNTY SUMMARY
EMPLOYMENT AND TOTAL EARNINGS, BY INDUSTRY
FIRST QUARTER 2000**

INDUSTRY GROUP	NUMBER OF EMPLOYING UNITS	EMPLOYMENT			TOTAL EARNINGS	AVERAGE WEEKLY EARNINGS
		JANUARY	FEBRUARY	MARCH	JAN.-MAR. 2000	
ARKANSAS COUNTY - TOTAL	640	9,359	9,049	9,161	\$53,154,984	\$444.94
MANUFACTURING	32	3,247	3,251	3,257	22,032,321	521.21
NONMANUFACTURING	608	6,112	5,798	5,904	31,122,663	403.17
AGRICULTURE, FORESTRY, AND FISHING	46	196	205	224	1,172,484	432.92
CONSTRUCTION	54	278	284	313	2,008,086	529.61
TRANSPORTATION AND PUBLIC UTILITIES	66	801	458	462	3,936,731	527.88
WHOLESALE AND RETAIL TRADE	189	1,995	2,031	2,069	10,724,471	406.05
WHOLESALE TRADE	52	550	573	617	5,623,608	745.84
RETAIL TRADE	137	1,445	1,458	1,452	5,100,863	270.29
FINANCE, INSURANCE, AND REAL ESTATE	36	294	284	281	1,838,647	493.95
SERVICES	170	1,343	1,329	1,341	5,591,393	321.54
LOCAL GOVERNMENT	32	992	997	1,001	4,710,371	363.55
STATE GOVERNMENT	15	213	210	213	1,140,480	413.82
ASHLEY COUNTY - TOTAL	593	9,590	9,637	9,831	\$73,355,456	\$582.57
MANUFACTURING	67	3,830	3,829	3,818	42,556,313	855.68
NONMANUFACTURING	526	5,760	5,808	6,013	30,799,143	404.27
CONSTRUCTION	54	1,014	1,046	1,121	6,893,014	500.06
TRANSPORTATION AND PUBLIC UTILITIES	43	362	365	373	2,826,210	592.91
WHOLESALE AND RETAIL TRADE	162	1,448	1,449	1,506	5,807,632	304.39
WHOLESALE TRADE	30	202	210	214	1,618,949	596.81
RETAIL TRADE	132	1,246	1,239	1,292	4,188,683	255.92
FINANCE, INSURANCE, AND REAL ESTATE	39	276	282	294	1,798,429	487.12
SERVICES	139	1,072	1,077	1,125	5,133,277	361.82
LOCAL GOVERNMENT	36	1,050	1,050	1,041	5,019,015	368.75
STATE GOVERNMENT	12	222	226	229	1,026,883	350.03
OTHER NONMANUFACTURING	41	316	313	324	2,294,683	555.66
BAXTER COUNTY - TOTAL	1,126	13,750	13,890	14,159	\$73,892,650	\$407.96
MANUFACTURING	75	3,575	3,625	3,608	23,003,844	491.17
NONMANUFACTURING	1,051	10,175	10,265	10,551	50,888,806	378.93
CONSTRUCTION	123	508	517	531	2,588,791	383.94
TRANSPORTATION AND PUBLIC UTILITIES	50	400	400	414	2,578,057	490.06
WHOLESALE AND RETAIL TRADE	321	3,032	3,059	3,175	11,215,180	279.31
WHOLESALE TRADE	45	310	325	335	1,592,443	378.85
RETAIL TRADE	276	2,722	2,734	2,840	9,622,737	267.67
FINANCE, INSURANCE, AND REAL ESTATE	82	460	451	450	3,272,979	554.96
SERVICES	405	4,198	4,248	4,369	22,958,832	413.44
LOCAL GOVERNMENT	35	1,144	1,156	1,155	5,967,571	398.59
STATE GOVERNMENT	11	251	261	272	1,423,203	418.92
OTHER NONMANUFACTURING	24	182	173	185	884,193	377.86

**TABLE 8. COUNTY SUMMARY
EMPLOYMENT AND TOTAL EARNINGS, BY INDUSTRY
FIRST QUARTER 2000**

INDUSTRY GROUP	NUMBER OF EMPLOYING UNITS	EMPLOYMENT			TOTAL EARNINGS	AVERAGE WEEKLY EARNINGS
		JANUARY	FEBRUARY	MARCH	JAN.-MAR. 2000	
BENTON COUNTY - TOTAL	3,293	67,435	67,889	68,875	\$651,096,817	\$735.82
MANUFACTURING	226	17,275	17,200	17,166	127,497,566	569.75
NONMANUFACTURING	3,067	50,160	50,689	51,709	523,599,251	792.03
CONSTRUCTION	418	2,840	2,900	3,032	18,188,274	478.49
TRANSPORTATION AND PUBLIC UTILITIES	190	4,224	4,243	4,393	37,178,715	667.16
WHOLESALE AND RETAIL TRADE	957	22,862	22,853	23,136	344,266,868	1153.89
WHOLESALE TRADE	269	1,988	1,991	2,068	19,481,207	743.45
RETAIL TRADE	688	20,874	20,862	21,068	324,785,661	1193.40
FINANCE, INSURANCE, AND REAL ESTATE SERVICES	311	2,532	2,516	2,553	21,303,774	646.79
LOCAL GOVERNMENT	1,022	11,157	11,445	11,815	63,263,687	424.19
STATE GOVERNMENT	69	5,042	5,071	5,076	29,849,408	453.51
OTHER NONMANUFACTURING	19	488	654	658	3,567,754	457.40
	81	1,015	1,007	1,046	5,980,771	449.86
BOONE COUNTY - TOTAL	999	13,874	13,978	14,197	\$80,403,882	\$441.26
MANUFACTURING	73	3,116	3,059	3,100	21,166,651	526.64
NONMANUFACTURING	926	10,758	10,919	11,097	59,237,231	417.10
CONSTRUCTION	95	632	662	691	4,292,849	499.07
TRANSPORTATION AND PUBLIC UTILITIES	66	1,399	1,428	1,442	11,984,358	647.84
WHOLESALE AND RETAIL TRADE	290	3,800	3,768	3,835	16,320,358	330.28
WHOLESALE TRADE	62	1,154	1,146	1,143	6,825,733	457.50
RETAIL TRADE	228	2,646	2,622	2,692	9,494,625	275.26
FINANCE, INSURANCE, AND REAL ESTATE SERVICES	75	480	496	500	3,550,120	555.05
LOCAL GOVERNMENT	327	1,968	1,989	2,048	9,065,067	348.37
STATE GOVERNMENT	45	1,950	1,961	1,959	10,295,329	404.74
OTHER NONMANUFACTURING	18	486	571	576	3,591,556	507.54
	10	43	44	46	137,594	238.74
BRADLEY COUNTY - TOTAL	347	4,175	4,198	4,102	\$21,412,730	\$396.10
MANUFACTURING	61	1,056	1,046	1,022	7,691,757	568.19
NONMANUFACTURING	286	3,119	3,152	3,080	13,720,973	338.61
CONSTRUCTION	28	108	118	127	562,331	367.62
TRANSPORTATION AND PUBLIC UTILITIES	24	48	44	46	379,100	633.95
WHOLESALE AND RETAIL TRADE	82	682	673	698	2,560,915	287.86
WHOLESALE TRADE	20	176	169	181	859,004	376.87
RETAIL TRADE	62	506	504	517	1,701,911	257.20
FINANCE, INSURANCE, AND REAL ESTATE SERVICES	23	136	141	144	716,917	392.97
LOCAL GOVERNMENT	79	740	724	738	3,606,451	377.96
STATE GOVERNMENT	17	495	522	526	2,437,964	364.62
OTHER NONMANUFACTURING	11	249	248	249	1,315,388	406.90
	22	661	682	552	2,141,907	260.84

**TABLE 8. COUNTY SUMMARY
EMPLOYMENT AND TOTAL EARNINGS, BY INDUSTRY
FIRST QUARTER 2000**

INDUSTRY GROUP	NUMBER OF EMPLOYING UNITS	EMPLOYMENT			TOTAL EARNINGS	AVERAGE WEEKLY EARNINGS
		JANUARY	FEBRUARY	MARCH	JAN.-MAR. 2000	
CALHOUN COUNTY - TOTAL	149	2,986	3,042	3,052	\$21,319,779	\$541.84
MANUFACTURING	40	1,914	1,929	1,918	15,283,019	612.19
NONMANUFACTURING	109	1,072	1,113	1,134	6,036,760	419.73
CONSTRUCTION	13	63	67	74	316,878	358.46
TRANSPORTATION AND PUBLIC UTILITIES	21	166	159	167	1,028,351	482.34
WHOLESALE AND RETAIL TRADE	25	93	94	92	251,349	207.90
SERVICES	18	132	137	138	685,821	388.86
LOCAL GOVERNMENT	12	226	229	232	987,388	331.67
STATE GOVERNMENT	10	274	309	308	1,764,817	457.09
OTHER NONMANUFACTURING	10	118	118	123	1,002,156	644.20
CARROLL COUNTY - TOTAL	755	8,860	8,899	9,339	\$43,183,606	\$367.76
AGRICULTURE, FORESTRY, AND FISHING	22	366	358	373	1,859,779	391.23
WHOLESALE AND RETAIL TRADE	265	1,640	1,662	1,906	5,971,265	264.59
WHOLESALE TRADE	28	66	65	65	330,083	388.64
RETAIL TRADE	237	1,574	1,597	1,841	5,641,182	259.74
SERVICES	248	1,409	1,455	1,609	6,870,458	354.46
LOCAL GOVERNMENT	25	840	824	841	4,106,094	378.27
STATE GOVERNMENT	10	87	84	87	458,888	410.45
OTHER	185	4,518	4,516	4,523	23,917,122	407.12
CHICOT COUNTY - TOTAL	360	4,297	4,301	4,370	\$20,288,347	\$361.04
MANUFACTURING	14	1,052	993	972	4,147,506	317.24
NONMANUFACTURING	346	3,245	3,308	3,398	16,140,841	374.32
CONSTRUCTION	18	162	174	172	1,035,256	470.29
TRANSPORTATION AND PUBLIC UTILITIES	17	90	91	95	806,206	674.09
WHOLESALE AND RETAIL TRADE	106	802	829	857	3,237,501	300.29
WHOLESALE TRADE	27	204	210	226	1,115,289	402.15
RETAIL TRADE	79	598	619	631	2,122,212	265.01
FINANCE, INSURANCE, AND REAL ESTATE	27	167	168	169	956,317	437.87
SERVICES	95	607	614	628	2,791,891	348.45
LOCAL GOVERNMENT	16	901	916	910	4,448,613	376.46
STATE GOVERNMENT	13	295	288	298	1,834,071	480.42
OTHER NONMANUFACTURING	54	221	228	269	1,030,986	331.36

**TABLE 8. COUNTY SUMMARY
EMPLOYMENT AND TOTAL EARNINGS, BY INDUSTRY
FIRST QUARTER 2000**

INDUSTRY GROUP	NUMBER OF EMPLOYING UNITS	EMPLOYMENT			TOTAL EARNINGS	AVERAGE WEEKLY EARNINGS
		JANUARY	FEBRUARY	MARCH	JAN.-MAR. 2000	
CLARK COUNTY - TOTAL	605	10,104	10,213	10,308	\$52,624,922	\$396.55
MANUFACTURING	71	3,010	3,051	3,084	19,249,724	485.76
NONMANUFACTURING	534	7,094	7,162	7,224	33,375,198	358.56
AGRICULTURE, FORESTRY, AND FISHING	7	39	37	38	188,284	381.14
CONSTRUCTION	34	125	122	123	543,521	338.99
TRANSPORTATION AND PUBLIC UTILITIES	35	496	499	499	4,016,604	620.42
WHOLESALE AND RETAIL TRADE	169	2,282	2,237	2,276	7,465,138	253.53
WHOLESALE TRADE	29	182	174	179	904,947	390.34
RETAIL TRADE	140	2,100	2,063	2,097	6,560,191	241.84
FINANCE, INSURANCE, AND REAL ESTATE	65	370	372	389	2,187,621	446.36
SERVICES	182	1,879	1,978	1,983	8,472,455	334.79
LOCAL GOVERNMENT	27	839	843	842	4,065,788	371.73
STATE GOVERNMENT	15	1,064	1,074	1,074	6,435,787	462.39
CLAY COUNTY - TOTAL	460	6,150	6,116	6,237	\$28,543,259	\$355.99
MANUFACTURING	28	2,946	2,924	2,947	13,613,595	356.31
NONMANUFACTURING	432	3,204	3,192	3,290	14,929,664	355.70
AGRICULTURE, FORESTRY, AND FISHING	67	146	149	201	817,319	380.27
CONSTRUCTION	46	169	167	184	1,257,348	557.99
TRANSPORTATION AND PUBLIC UTILITIES	38	222	225	228	1,500,389	512.95
WHOLESALE AND RETAIL TRADE	123	1,139	1,115	1,125	4,154,347	283.72
WHOLESALE TRADE	38	375	363	376	1,932,134	400.25
RETAIL TRADE	85	764	752	749	2,222,213	226.41
FINANCE, INSURANCE, AND REAL ESTATE	31	148	150	146	779,551	405.17
SERVICES	94	465	467	471	1,969,507	323.95
LOCAL GOVERNMENT	22	833	836	852	4,004,484	366.57
STATE GOVERNMENT	11	82	83	83	446,719	415.68
CLEBURNE COUNTY - TOTAL	612	6,198	6,141	6,290	\$29,860,257	\$369.90
MANUFACTURING	44	1,670	1,646	1,641	8,772,516	408.40
NONMANUFACTURING	568	4,528	4,495	4,649	21,087,741	355.94
CONSTRUCTION	61	256	256	262	1,267,270	377.84
TRANSPORTATION AND PUBLIC UTILITIES	47	377	368	385	2,768,467	565.38
WHOLESALE AND RETAIL TRADE	186	1,554	1,535	1,599	5,533,890	272.41
WHOLESALE TRADE	35	168	170	176	987,722	443.45
RETAIL TRADE	151	1,386	1,365	1,423	4,546,168	251.35
FINANCE, INSURANCE, AND REAL ESTATE	51	236	233	240	1,246,023	405.56
SERVICES	178	1,195	1,192	1,229	5,707,219	364.23
LOCAL GOVERNMENT	19	728	725	738	3,558,636	374.82
STATE GOVERNMENT	10	112	118	121	590,972	388.54
OTHER NONMANUFACTURING	16	70	68	75	415,264	449.91

**TABLE 8. COUNTY SUMMARY
EMPLOYMENT AND TOTAL EARNINGS, BY INDUSTRY
FIRST QUARTER 2000**

INDUSTRY GROUP	NUMBER OF EMPLOYING UNITS	EMPLOYMENT			TOTAL EARNINGS	AVERAGE WEEKLY EARNINGS
		JANUARY	FEBRUARY	MARCH	JAN.-MAR. 2000	
CLEVELAND COUNTY - TOTAL	125	1,106	1,099	1,117	\$4,917,506	\$341.60
MANUFACTURING	23	162	160	165	744,065	352.58
NONMANUFACTURING	102	944	939	952	4,173,441	339.72
CONSTRUCTION	12	49	48	53	155,930	239.89
TRANSPORTATION AND PUBLIC UTILITIES	12	96	94	97	543,344	436.89
WHOLESALE AND RETAIL TRADE	25	170	169	177	574,757	257.05
WHOLESALE TRADE	5	76	75	83	344,981	340.22
RETAIL TRADE	20	94	94	94	229,776	188.03
FINANCE, INSURANCE, AND REAL ESTATE	5	29	29	29	154,051	408.62
LOCAL GOVERNMENT	12	331	334	340	1,471,187	337.82
STATE GOVERNMENT	8	57	56	55	312,431	429.16
OTHER NONMANUFACTURING	28	212	209	201	961,741	356.82
COLUMBIA COUNTY - TOTAL	730	9,947	10,018	10,244	\$60,165,300	\$459.61
MANUFACTURING	58	3,027	3,053	3,075	26,719,764	673.52
NONMANUFACTURING	672	6,920	6,965	7,169	33,445,536	366.59
AGRICULTURE, FORESTRY, AND FISHING	22	129	146	160	655,937	347.98
MINING	36	332	322	320	2,592,240	614.18
CONSTRUCTION	47	372	374	465	1,986,427	378.54
TRANSPORTATION AND PUBLIC UTILITIES	59	494	495	490	3,751,488	585.35
WHOLESALE AND RETAIL TRADE	209	2,057	2,067	2,131	7,238,901	267.07
WHOLESALE TRADE	40	275	282	322	1,697,030	445.53
RETAIL TRADE	169	1,782	1,785	1,809	5,541,871	237.89
FINANCE, INSURANCE, AND REAL ESTATE	42	383	377	382	2,210,860	446.76
SERVICES	211	1,407	1,430	1,459	5,298,118	284.60
LOCAL GOVERNMENT	30	1,229	1,231	1,247	6,115,857	380.73
STATE GOVERNMENT	16	517	523	515	3,595,708	533.62
CONWAY COUNTY - TOTAL	463	6,156	6,293	6,346	\$36,729,841	\$450.98
MANUFACTURING	30	872	910	904	9,007,284	773.87
NONMANUFACTURING	433	5,284	5,383	5,442	27,722,557	397.14
CONSTRUCTION	51	566	557	580	4,163,219	564.15
TRANSPORTATION AND PUBLIC UTILITIES	26	398	427	419	2,872,671	532.90
WHOLESALE AND RETAIL TRADE	148	1,584	1,600	1,614	6,405,863	308.10
WHOLESALE TRADE	39	350	349	355	2,266,643	496.27
RETAIL TRADE	109	1,234	1,251	1,259	4,139,220	255.13
FINANCE, INSURANCE, AND REAL ESTATE	27	159	163	161	944,785	451.40
SERVICES	129	1,270	1,336	1,363	6,488,704	377.27
LOCAL GOVERNMENT	24	845	846	844	4,182,417	380.74
STATE GOVERNMENT	13	336	328	338	1,674,915	385.75
OTHER NONMANUFACTURING	15	126	126	123	989,983	609.22

TABLE 8. COUNTY SUMMARY
EMPLOYMENT AND TOTAL EARNINGS, BY INDUSTRY
FIRST QUARTER 2000

INDUSTRY GROUP	NUMBER OF EMPLOYING UNITS	EMPLOYMENT			TOTAL EARNINGS	AVERAGE WEEKLY EARNINGS
		JANUARY	FEBRUARY	MARCH	JAN.-MAR. 2000	
CRAIGHEAD COUNTY - TOTAL	2,393	38,236	38,526	38,887	\$234,837,596	\$468.60
MANUFACTURING	145	8,793	8,880	9,030	68,049,577	588.09
NONMANUFACTURING	2,248	29,443	29,646	29,857	166,788,019	432.73
CONSTRUCTION	231	1,801	1,738	1,826	10,057,584	432.62
TRANSPORTATION AND PUBLIC UTILITIES	162	1,736	1,767	1,787	12,881,134	561.92
WHOLESALE AND RETAIL TRADE	734	9,569	9,576	9,649	39,359,257	315.44
WHOLESALE TRADE	187	1,574	1,604	1,645	10,890,544	521.09
RETAIL TRADE	547	7,995	7,972	8,004	28,468,713	274.07
FINANCE, INSURANCE, AND REAL ESTATE SERVICES	195	1,157	1,145	1,148	9,982,046	667.70
LOCAL GOVERNMENT	787	9,684	9,907	9,872	59,428,930	465.48
STATE GOVERNMENT	39	3,015	3,031	3,023	16,584,288	422.00
OTHER NONMANUFACTURING	24	2,153	2,158	2,177	16,942,976	602.64
	76	328	324	375	1,551,804	348.69
CRAWFORD COUNTY - TOTAL	1,010	16,380	16,324	16,606	\$96,952,543	\$453.73
MANUFACTURING	76	4,447	4,406	4,401	26,404,028	459.73
NONMANUFACTURING	934	11,933	11,918	12,205	70,548,515	451.53
CONSTRUCTION	151	938	888	897	6,012,744	509.57
TRANSPORTATION AND PUBLIC UTILITIES	73	3,038	3,042	3,033	24,457,197	619.33
WHOLESALE AND RETAIL TRADE	288	3,178	3,183	3,398	12,802,773	302.74
WHOLESALE TRADE	77	592	590	597	3,772,888	489.41
RETAIL TRADE	211	2,586	2,593	2,801	9,029,885	261.13
FINANCE, INSURANCE, AND REAL ESTATE SERVICES	82	371	370	368	2,461,555	512.22
LOCAL GOVERNMENT	260	2,079	2,085	2,082	11,375,115	420.27
STATE GOVERNMENT	40	1,815	1,812	1,812	10,331,593	438.36
OTHER NONMANUFACTURING	12	155	154	156	1,009,318	500.90
	28	359	384	459	2,098,220	402.83
CRITTENDEN COUNTY - TOTAL	1,135	16,515	16,592	16,794	\$92,753,998	\$428.94
MANUFACTURING	56	2,098	2,073	2,100	16,191,704	595.85
NONMANUFACTURING	1,079	14,417	14,519	14,694	76,562,294	404.96
CONSTRUCTION	88	528	534	579	2,965,498	417.03
TRANSPORTATION AND PUBLIC UTILITIES	92	1,661	1,650	1,658	13,019,626	604.65
WHOLESALE AND RETAIL TRADE	338	4,947	4,942	4,934	21,387,948	332.97
WHOLESALE TRADE	83	729	743	754	5,131,253	531.96
RETAIL TRADE	255	4,218	4,199	4,180	16,256,695	297.81
FINANCE, INSURANCE, AND REAL ESTATE SERVICES	88	419	422	430	3,323,607	603.45
LOCAL GOVERNMENT	351	3,841	3,843	3,909	18,955,918	377.33
STATE GOVERNMENT	40	2,285	2,305	2,336	13,114,869	436.98
OTHER NONMANUFACTURING	19	422	495	452	2,464,412	415.42
	63	314	328	396	1,330,416	295.78

**TABLE 8. COUNTY SUMMARY
EMPLOYMENT AND TOTAL EARNINGS, BY INDUSTRY
FIRST QUARTER 2000**

INDUSTRY GROUP	NUMBER OF EMPLOYING UNITS	EMPLOYMENT			TOTAL EARNINGS	AVERAGE WEEKLY EARNINGS
		JANUARY	FEBRUARY	MARCH	JAN.-MAR. 2000	
CROSS COUNTY - TOTAL	450	5,446	5,534	5,635	\$29,975,601	\$416.34
MANUFACTURING	22	1,371	1,371	1,361	9,139,332	514.03
NONMANUFACTURING	428	4,075	4,163	4,274	20,836,269	384.30
AGRICULTURE, FORESTRY, AND FISHING	38	128	135	157	704,000	386.81
CONSTRUCTION	41	121	130	146	588,009	341.80
TRANSPORTATION AND PUBLIC UTILITIES	46	404	397	407	2,689,392	513.77
WHOLESALE AND RETAIL TRADE	130	1,308	1,326	1,386	5,581,053	320.38
WHOLESALE TRADE	36	294	304	337	2,007,035	495.36
RETAIL TRADE	94	1,014	1,022	1,049	3,574,018	267.35
FINANCE, INSURANCE, AND REAL ESTATE	31	221	220	219	1,584,768	554.11
SERVICES	110	791	812	823	3,528,826	335.67
LOCAL GOVERNMENT	19	870	916	912	4,609,624	394.28
STATE GOVERNMENT	13	232	227	224	1,550,597	523.91
DALLAS COUNTY - TOTAL	286	3,433	3,434	3,457	\$18,025,015	\$402.91
MANUFACTURING	68	1,218	1,225	1,198	7,702,168	488.17
NONMANUFACTURING	218	2,215	2,209	2,259	10,322,847	356.46
AGRICULTURE, FORESTRY, AND FISHING	6	26	30	32	130,347	341.82
CONSTRUCTION	21	121	128	130	575,300	350.29
TRANSPORTATION AND PUBLIC UTILITIES	21	83	82	78	485,218	460.80
WHOLESALE AND RETAIL TRADE	78	624	623	641	2,551,239	311.84
WHOLESALE TRADE	14	80	83	82	505,059	475.72
RETAIL TRADE	64	544	540	559	2,046,180	287.40
FINANCE, INSURANCE, AND REAL ESTATE	14	80	77	79	374,077	365.79
SERVICES	53	772	754	780	3,641,503	364.42
LOCAL GOVERNMENT	16	447	453	458	2,216,572	376.67
STATE GOVERNMENT	9	62	62	61	348,591	434.83
DESHA COUNTY - TOTAL	458	5,308	5,352	5,236	\$30,697,931	\$445.66
MANUFACTURING	23	1,553	1,581	1,402	12,766,122	649.48
NONMANUFACTURING	435	3,755	3,771	3,834	17,931,809	364.27
CONSTRUCTION	25	145	151	165	1,152,837	577.09
TRANSPORTATION AND PUBLIC UTILITIES	37	170	179	178	1,126,906	493.46
WHOLESALE AND RETAIL TRADE	131	1,177	1,178	1,193	4,675,903	304.13
WHOLESALE TRADE	26	233	233	238	1,707,717	559.78
RETAIL TRADE	105	944	945	955	2,968,186	240.85
FINANCE, INSURANCE, AND REAL ESTATE	38	253	255	259	1,186,513	356.99
SERVICES	118	684	677	673	3,141,023	356.37
LOCAL GOVERNMENT	23	926	926	951	4,558,481	375.30
STATE GOVERNMENT	11	185	186	186	1,038,796	430.38
OTHER NONMANUFACTURING	52	215	219	229	1,051,350	365.94

**TABLE 8. COUNTY SUMMARY
EMPLOYMENT AND TOTAL EARNINGS, BY INDUSTRY
FIRST QUARTER 2000**

INDUSTRY GROUP	NUMBER OF EMPLOYING UNITS	EMPLOYMENT			TOTAL EARNINGS	AVERAGE WEEKLY EARNINGS
		JANUARY	FEBRUARY	MARCH	JAN.-MAR. 2000	
DREW COUNTY - TOTAL	510	7,437	7,255	7,424	\$38,157,089	\$398.15
MANUFACTURING	50	2,346	2,179	2,325	12,858,946	433.20
NONMANUFACTURING	460	5,091	5,076	5,099	25,298,143	382.42
CONSTRUCTION	27	130	109	110	566,102	374.32
TRANSPORTATION AND PUBLIC UTILITIES	40	195	192	196	1,463,197	579.18
WHOLESALE AND RETAIL TRADE	162	1,745	1,734	1,734	6,323,446	279.93
WHOLESALE TRADE	34	260	264	265	1,853,109	542.00
RETAIL TRADE	128	1,485	1,470	1,469	4,470,337	233.19
FINANCE, INSURANCE, AND REAL ESTATE	37	228	228	227	1,843,735	622.95
SERVICES	129	1,098	1,085	1,105	4,681,920	328.60
LOCAL GOVERNMENT	24	1,039	1,051	1,053	5,558,110	408.09
STATE GOVERNMENT	14	521	537	540	3,932,531	567.90
OTHER NONMANUFACTURING	27	135	140	134	929,102	524.23
FAULKNER COUNTY - TOTAL	1,785	32,814	32,991	33,400	\$211,816,358	\$492.72
MANUFACTURING	88	7,431	7,450	7,492	55,723,082	574.76
NONMANUFACTURING	1,697	25,383	25,541	25,908	156,093,276	468.83
CONSTRUCTION	248	2,583	2,573	2,628	15,637,659	463.60
TRANSPORTATION AND PUBLIC UTILITIES	68	683	691	692	5,399,799	603.15
WHOLESALE AND RETAIL TRADE	545	7,335	7,371	7,492	26,962,363	280.30
WHOLESALE TRADE	121	849	866	887	5,527,480	490.23
RETAIL TRADE	424	6,486	6,505	6,605	21,434,883	252.42
FINANCE, INSURANCE, AND REAL ESTATE	161	916	908	924	6,309,573	529.86
SERVICES	586	8,802	8,891	9,036	67,710,625	584.59
LOCAL GOVERNMENT	34	2,474	2,516	2,536	15,074,687	462.23
STATE GOVERNMENT	20	2,404	2,407	2,400	18,045,051	577.48
OTHER NONMANUFACTURING	35	186	184	200	953,519	386.04
FRANKLIN COUNTY - TOTAL	290	4,123	4,096	4,095	\$20,855,758	\$390.85
MANUFACTURING	22	1,181	1,168	1,157	6,645,794	437.43
NONMANUFACTURING	268	2,942	2,928	2,938	14,209,964	372.30
CONSTRUCTION	20	138	145	134	753,934	417.23
TRANSPORTATION AND PUBLIC UTILITIES	19	345	338	344	2,631,358	591.27
WHOLESALE AND RETAIL TRADE	87	742	737	752	2,319,868	239.96
WHOLESALE TRADE	14	68	62	63	216,386	258.73
RETAIL TRADE	73	674	675	689	2,103,482	238.18
FINANCE, INSURANCE, AND REAL ESTATE	26	143	144	142	626,918	337.23
SERVICES	71	607	599	599	2,599,307	332.32
LOCAL GOVERNMENT	23	719	719	727	3,671,000	391.30
STATE GOVERNMENT	10	133	136	137	789,293	448.63
OTHER NONMANUFACTURING	12	115	110	103	818,286	575.72

**TABLE 8. COUNTY SUMMARY
EMPLOYMENT AND TOTAL EARNINGS, BY INDUSTRY
FIRST QUARTER 2000**

INDUSTRY GROUP	NUMBER OF EMPLOYING UNITS	EMPLOYMENT			TOTAL EARNINGS	AVERAGE WEEKLY EARNINGS
		JANUARY	FEBRUARY	MARCH	JAN.-MAR. 2000	
FULTON COUNTY - TOTAL	191	1,791	1,831	1,882	\$7,456,341	\$312.63
MANUFACTURING	13	353	345	349	1,099,598	242.36
NONMANUFACTURING	178	1,438	1,486	1,533	6,356,743	329.13
TRANSPORTATION AND PUBLIC UTILITIES	10	102	102	107	731,174	542.55
WHOLESALE AND RETAIL TRADE	66	343	385	409	988,800	200.69
WHOLESALE TRADE	12	53	58	64	199,410	262.96
RETAIL TRADE	54	290	327	345	789,390	189.36
FINANCE, INSURANCE, AND REAL ESTATE	11	77	77	78	417,312	415.10
SERVICES	51	278	273	286	1,142,169	314.91
LOCAL GOVERNMENT	13	471	485	478	2,224,927	358.05
STATE GOVERNMENT	10	72	72	72	378,681	404.57
OTHER NONMANUFACTURING	17	95	92	103	473,680	376.93
GARLAND COUNTY - TOTAL	2,723	32,603	33,717	34,212	\$185,351,598	\$425.47
MANUFACTURING	126	3,985	4,016	4,064	29,458,548	563.46
NONMANUFACTURING	2,597	28,618	29,701	30,148	155,893,050	406.65
AGRICULTURE, FORESTRY, AND FISHING	71	446	458	474	2,222,801	372.25
MINING	14	196	196	200	1,712,106	667.40
CONSTRUCTION	358	2,485	2,525	2,628	13,547,283	409.31
TRANSPORTATION AND PUBLIC UTILITIES	90	919	945	963	7,754,331	632.99
WHOLESALE AND RETAIL TRADE	829	9,314	9,656	9,673	39,341,365	316.96
WHOLESALE TRADE	163	1,392	1,392	1,404	9,461,396	521.35
RETAIL TRADE	666	7,922	8,264	8,269	29,879,969	281.96
FINANCE, INSURANCE, AND REAL ESTATE	267	1,350	1,348	1,345	10,041,788	573.17
SERVICES	911	10,418	11,069	11,294	59,997,465	422.37
LOCAL GOVERNMENT	34	2,642	2,671	2,690	15,638,707	450.95
STATE GOVERNMENT	23	848	833	881	5,637,204	507.76
GRANT COUNTY - TOTAL	281	3,689	3,707	3,768	\$20,815,148	\$430.27
MANUFACTURING	42	1,320	1,343	1,359	9,374,676	537.89
NONMANUFACTURING	239	2,369	2,364	2,409	11,440,472	369.66
CONSTRUCTION	27	164	159	169	980,056	459.69
TRANSPORTATION AND PUBLIC UTILITIES	34	98	98	100	686,943	535.56
WHOLESALE AND RETAIL TRADE	79	759	753	780	2,844,854	286.43
WHOLESALE TRADE	20	131	124	121	872,785	535.67
RETAIL TRADE	59	628	629	659	1,972,069	237.52
FINANCE, INSURANCE, AND REAL ESTATE	15	96	94	93	620,826	506.25
SERVICES	55	340	344	348	1,496,431	334.62
LOCAL GOVERNMENT	10	774	779	784	3,974,932	392.51
STATE GOVERNMENT	10	67	65	65	395,769	463.61
OTHER NONMANUFACTURING	9	71	72	70	440,661	477.42

**TABLE 8. COUNTY SUMMARY
EMPLOYMENT AND TOTAL EARNINGS, BY INDUSTRY
FIRST QUARTER 2000**

INDUSTRY GROUP	NUMBER OF EMPLOYING UNITS	EMPLOYMENT			TOTAL EARNINGS	AVERAGE WEEKLY EARNINGS
		JANUARY	FEBRUARY	MARCH	JAN.-MAR. 2000	
GREENE COUNTY - TOTAL	794	14,790	14,837	14,936	\$83,839,763	\$434.16
MANUFACTURING	54	6,460	6,530	6,593	45,466,497	535.78
NONMANUFACTURING	740	8,330	8,307	8,343	38,373,266	354.50
CONSTRUCTION	74	289	286	310	1,447,667	377.49
TRANSPORTATION AND PUBLIC UTILITIES	39	213	216	224	1,948,390	688.56
WHOLESALE AND RETAIL TRADE	265	2,934	2,979	2,999	10,793,978	279.50
WHOLESALE TRADE	57	491	492	504	2,810,163	436.11
RETAIL TRADE	208	2,443	2,487	2,495	7,983,815	248.14
FINANCE, INSURANCE, AND REAL ESTATE SERVICES	58	345	339	341	2,290,640	515.72
SERVICES	239	2,829	2,742	2,696	12,304,853	343.48
LOCAL GOVERNMENT	31	1,393	1,410	1,427	7,459,669	406.97
STATE GOVERNMENT	11	233	232	232	1,655,298	548.05
OTHER NONMANUFACTURING	23	94	103	114	472,771	350.81
HEMPSTEAD COUNTY - TOTAL	499	9,149	9,225	9,327	\$47,790,049	\$398.13
MANUFACTURING	40	3,815	3,844	3,899	21,584,142	430.95
NONMANUFACTURING	459	5,334	5,381	5,428	26,205,907	374.62
CONSTRUCTION	31	105	108	117	650,383	454.81
TRANSPORTATION AND PUBLIC UTILITIES	32	262	262	268	2,356,793	686.71
WHOLESALE AND RETAIL TRADE	142	1,476	1,475	1,489	5,334,921	277.28
WHOLESALE TRADE	30	225	221	217	1,199,061	417.36
RETAIL TRADE	112	1,251	1,254	1,272	4,135,860	252.70
FINANCE, INSURANCE, AND REAL ESTATE SERVICES	33	228	231	227	1,493,351	502.36
SERVICES	160	1,557	1,583	1,592	7,079,387	345.25
LOCAL GOVERNMENT	31	1,000	989	993	5,156,006	399.01
STATE GOVERNMENT	15	500	516	517	2,951,658	444.33
OTHER NONMANUFACTURING	15	206	217	225	1,183,408	421.44
HOT SPRING COUNTY - TOTAL	620	7,543	7,591	7,709	\$45,260,443	\$457.24
MANUFACTURING	82	2,447	2,452	2,478	19,664,510	615.15
NONMANUFACTURING	538	5,096	5,139	5,231	25,595,933	381.92
AGRICULTURE, FORESTRY, AND FISHING	15	103	104	105	506,181	374.39
MINING	4	106	102	100	792,895	594.08
CONSTRUCTION	80	272	270	290	1,454,431	403.41
TRANSPORTATION AND PUBLIC UTILITIES	54	331	322	322	2,372,150	561.46
WHOLESALE AND RETAIL TRADE	162	1,419	1,427	1,442	5,614,086	302.14
WHOLESALE TRADE	27	116	110	110	861,183	591.47
RETAIL TRADE	135	1,303	1,317	1,332	4,752,903	277.54
FINANCE, INSURANCE, AND REAL ESTATE SERVICES	38	269	259	250	1,512,035	448.50
SERVICES	145	1,300	1,284	1,334	6,025,618	354.91
LOCAL GOVERNMENT	27	1,050	1,067	1,079	5,816,584	419.99
STATE GOVERNMENT	13	246	304	309	1,501,953	403.50

**TABLE 8. COUNTY SUMMARY
EMPLOYMENT AND TOTAL EARNINGS, BY INDUSTRY
FIRST QUARTER 2000**

INDUSTRY GROUP	NUMBER OF EMPLOYING UNITS	EMPLOYMENT			TOTAL EARNINGS	AVERAGE WEEKLY EARNINGS
		JANUARY	FEBRUARY	MARCH	JAN.-MAR. 2000	
HOWARD COUNTY - TOTAL	364	8,573	8,671	8,639	\$43,808,200	\$390.59
MANUFACTURING	42	5,155	5,212	5,176	28,725,524	426.49
NONMANUFACTURING	322	3,418	3,459	3,463	15,082,676	336.62
CONSTRUCTION	22	40	43	42	189,937	350.65
TRANSPORTATION AND PUBLIC UTILITIES	31	343	334	336	2,111,759	481.08
WHOLESALE AND RETAIL TRADE	113	991	1,021	1,032	3,273,639	248.18
WHOLESALE TRADE	23	106	101	110	570,534	415.34
RETAIL TRADE	90	885	920	922	2,703,105	228.75
FINANCE, INSURANCE, AND REAL ESTATE	24	136	132	133	762,481	438.80
SERVICES	84	862	875	862	3,271,711	290.50
LOCAL GOVERNMENT	18	602	603	615	3,141,075	398.28
STATE GOVERNMENT	13	165	169	171	993,092	453.81
OTHER NONMANUFACTURING	17	279	282	272	1,338,982	370.94
INDEPENDENCE COUNTY - TOTAL	888	15,674	15,769	15,835	\$91,856,959	\$448.36
MANUFACTURING	55	5,616	5,556	5,548	37,243,298	514.03
NONMANUFACTURING	833	10,058	10,213	10,287	54,613,661	412.43
AGRICULTURE, FORESTRY, AND FISHING	15	123	119	125	647,866	407.38
MINING	3	36	35	37	248,886	531.81
CONSTRUCTION	77	512	483	513	2,766,462	423.35
TRANSPORTATION AND PUBLIC UTILITIES	63	1,249	1,282	1,266	9,707,706	590.00
WHOLESALE AND RETAIL TRADE	274	3,006	3,017	3,063	11,533,744	292.94
WHOLESALE TRADE	55	527	524	539	3,080,158	447.05
RETAIL TRADE	219	2,479	2,493	2,524	8,453,586	260.25
FINANCE, INSURANCE, AND REAL ESTATE	77	357	362	369	2,433,858	516.23
SERVICES	270	3,067	3,136	3,132	17,986,137	444.63
LOCAL GOVERNMENT	38	1,336	1,353	1,359	6,588,272	375.59
STATE GOVERNMENT	16	372	426	423	2,700,730	510.44
IZARD COUNTY - TOTAL	261	3,040	3,017	3,068	\$15,387,589	\$389.15
MANUFACTURING	18	683	673	672	4,045,297	460.32
NONMANUFACTURING	243	2,357	2,344	2,396	11,342,292	368.81
CONSTRUCTION	26	65	63	58	242,460	300.82
WHOLESALE AND RETAIL TRADE	79	549	535	557	1,743,316	245.16
WHOLESALE TRADE	13	31	32	31	153,548	376.96
RETAIL TRADE	66	518	503	526	1,589,768	237.15
FINANCE, INSURANCE, AND REAL ESTATE	26	152	151	150	701,454	357.34
SERVICES	59	557	541	568	2,098,743	290.71
LOCAL GOVERNMENT	18	514	521	527	2,243,035	331.39
STATE GOVERNMENT	10	339	353	356	3,242,596	714.02
OTHER NONMANUFACTURING	25	181	180	180	1,070,688	456.71

**TABLE 8. COUNTY SUMMARY
EMPLOYMENT AND TOTAL EARNINGS, BY INDUSTRY
FIRST QUARTER 2000**

INDUSTRY GROUP	NUMBER OF EMPLOYING UNITS	EMPLOYMENT			TOTAL EARNINGS	AVERAGE WEEKLY EARNINGS
		JANUARY	FEBRUARY	MARCH	JAN.-MAR. 2000	
JACKSON COUNTY - TOTAL	549	5,672	5,695	5,821	\$31,310,045	\$420.37
MANUFACTURING	33	997	989	997	8,379,915	648.28
NONMANUFACTURING	516	4,675	4,706	4,824	22,930,130	372.51
CONSTRUCTION	30	188	183	199	1,143,988	463.15
TRANSPORTATION AND PUBLIC UTILITIES	29	292	290	293	1,854,557	489.11
WHOLESALE AND RETAIL TRADE	158	1,253	1,273	1,323	4,942,683	296.34
WHOLESALE TRADE	35	228	231	253	1,507,200	488.50
RETAIL TRADE	123	1,025	1,042	1,070	3,435,483	252.73
FINANCE, INSURANCE, AND REAL ESTATE	34	168	168	170	1,061,008	483.89
SERVICES	171	1,672	1,688	1,702	8,703,775	396.79
LOCAL GOVERNMENT	34	735	726	732	3,286,626	345.85
STATE GOVERNMENT	13	205	217	220	1,249,270	449.05
OTHER NONMANUFACTURING	47	162	161	185	688,223	312.64
JEFFERSON COUNTY - TOTAL	1,756	33,073	33,523	33,750	\$207,529,338	\$477.26
MANUFACTURING	90	8,433	8,503	8,495	68,247,518	619.30
NONMANUFACTURING	1,666	24,640	25,020	25,255	139,281,820	429.05
AGRICULTURE, FORESTRY, AND FISHING	62	425	427	453	2,389,193	422.49
CONSTRUCTION	118	994	1,063	1,117	7,248,018	526.98
TRANSPORTATION AND PUBLIC UTILITIES	85	1,135	1,141	1,128	11,607,168	786.89
WHOLESALE AND RETAIL TRADE	582	7,095	7,165	7,163	29,727,240	320.22
WHOLESALE TRADE	115	1,189	1,195	1,190	8,215,187	530.45
RETAIL TRADE	467	5,906	5,970	5,973	21,512,053	278.13
FINANCE, INSURANCE, AND REAL ESTATE	130	1,168	1,179	1,166	8,912,015	585.43
SERVICES	618	7,837	7,927	7,998	42,795,831	415.62
LOCAL GOVERNMENT	41	3,235	3,286	3,368	19,816,726	462.44
STATE GOVERNMENT	30	2,751	2,832	2,862	16,785,629	458.69
JOHNSON COUNTY - TOTAL	431	7,891	7,902	8,121	\$39,614,807	\$382.28
MANUFACTURING	47	3,242	3,271	3,329	17,296,317	405.55
NONMANUFACTURING	384	4,649	4,631	4,792	22,318,490	366.00
CONSTRUCTION	32	129	131	137	710,021	412.72
TRANSPORTATION AND PUBLIC UTILITIES	12	60	61	62	447,489	564.30
WHOLESALE AND RETAIL TRADE	149	1,964	1,937	2,065	8,311,078	321.48
WHOLESALE TRADE	23	70	67	69	303,311	339.78
RETAIL TRADE	126	1,894	1,870	1,996	8,007,767	320.82
FINANCE, INSURANCE, AND REAL ESTATE	35	214	212	225	1,315,850	466.45
SERVICES	117	1,164	1,166	1,166	5,644,778	372.61
LOCAL GOVERNMENT	14	828	834	837	4,200,012	387.85
STATE GOVERNMENT	10	142	141	143	827,322	448.17
OTHER NONMANUFACTURING	15	148	149	157	861,940	438.13

**TABLE 8. COUNTY SUMMARY
EMPLOYMENT AND TOTAL EARNINGS, BY INDUSTRY
FIRST QUARTER 2000**

INDUSTRY GROUP	NUMBER OF EMPLOYING UNITS	EMPLOYMENT			TOTAL EARNINGS	AVERAGE WEEKLY EARNINGS
		JANUARY	FEBRUARY	MARCH	JAN.-MAR. 2000	
LAFAYETTE COUNTY - TOTAL	178	1,830	1,845	1,858	\$9,235,648	\$385.20
MANUFACTURING	16	480	485	480	2,746,268	438.58
NONMANUFACTURING	162	1,350	1,360	1,378	6,489,380	366.33
AGRICULTURE, FORESTRY, AND FISHING	12	49	48	50	157,113	246.65
MINING	7	47	39	43	284,873	509.61
CONSTRUCTION	12	82	86	84	635,251	581.73
TRANSPORTATION AND PUBLIC UTILITIES	16	120	116	116	1,028,713	674.42
WHOLESALE AND RETAIL TRADE	38	212	223	231	705,676	244.52
FINANCE, INSURANCE, AND REAL ESTATE SERVICES	15	86	83	83	506,910	464.20
LOCAL GOVERNMENT	36	283	282	286	1,062,285	288.06
STATE GOVERNMENT	16	384	394	394	1,646,555	324.21
	10	87	89	91	462,004	399.31
LAWRENCE COUNTY - TOTAL	440	4,795	4,787	4,824	\$22,223,114	\$355.99
MANUFACTURING	34	1,255	1,242	1,251	6,319,623	389.11
NONMANUFACTURING	406	3,540	3,545	3,573	15,903,491	344.35
AGRICULTURE, FORESTRY, AND FISHING	31	79	86	100	444,588	387.16
TRANSPORTATION AND PUBLIC UTILITIES	47	177	174	182	1,043,964	452.00
WHOLESALE AND RETAIL TRADE	125	1,159	1,152	1,168	4,377,534	290.37
WHOLESALE TRADE	28	238	242	241	1,569,594	502.38
RETAIL TRADE	97	921	910	927	2,807,940	234.95
FINANCE, INSURANCE, AND REAL ESTATE SERVICES	31	143	147	145	751,329	398.58
LOCAL GOVERNMENT	100	554	565	563	2,318,576	318.11
STATE GOVERNMENT	29	1,115	1,104	1,094	5,100,789	355.30
OTHER NONMANUFACTURING	12	146	145	146	934,291	493.38
	31	167	172	175	932,420	418.63
LEE COUNTY - TOTAL	233	2,495	2,553	2,621	\$12,750,145	\$383.67
AGRICULTURE, FORESTRY, AND FISHING	27	127	132	162	551,241	302.16
TRANSPORTATION AND PUBLIC UTILITIES	18	87	84	85	579,352	522.25
WHOLESALE AND RETAIL TRADE	59	428	432	451	1,608,900	283.21
WHOLESALE TRADE	11	72	72	85	438,825	442.22
RETAIL TRADE	48	356	360	366	1,170,075	249.55
SERVICES	67	373	390	403	1,747,028	345.76
LOCAL GOVERNMENT	16	445	442	443	1,891,553	328.20
STATE GOVERNMENT	10	444	459	452	2,687,967	457.79
OTHER	36	591	614	625	3,684,104	464.58

**TABLE 8. COUNTY SUMMARY
EMPLOYMENT AND TOTAL EARNINGS, BY INDUSTRY
FIRST QUARTER 2000**

INDUSTRY GROUP	NUMBER OF EMPLOYING UNITS	EMPLOYMENT			TOTAL EARNINGS	AVERAGE WEEKLY EARNINGS
		JANUARY	FEBRUARY	MARCH	JAN.-MAR. 2000	
LINCOLN COUNTY - TOTAL	208	3,243	3,197	3,265	\$16,185,046	\$384.85
MANUFACTURING	19	732	731	728	3,706,522	390.39
NONMANUFACTURING	189	2,511	2,466	2,537	12,478,524	383.24
AGRICULTURE, FORESTRY, AND FISHING	26	176	181	183	850,209	363.34
CONSTRUCTION	15	51	61	61	227,780	303.84
WHOLESALE AND RETAIL TRADE	47	333	339	340	999,431	227.90
WHOLESALE TRADE	6	30	30	33	186,957	463.91
RETAIL TRADE	41	303	309	307	812,474	204.02
FINANCE, INSURANCE, AND REAL ESTATE	18	74	73	72	471,758	497.11
SERVICES	43	371	377	374	1,499,481	308.41
LOCAL AND STATE GOVERNMENT	20	1,317	1,239	1,311	7,274,385	434.11
OTHER NONMANUFACTURING	20	189	196	196	1,155,480	458.95
LITTLE RIVER COUNTY - TOTAL	271	4,415	4,406	4,424	\$43,765,379	\$762.53
MANUFACTURING	27	1,583	1,578	1,583	28,521,303	1387.40
NONMANUFACTURING	244	2,832	2,828	2,841	15,244,076	413.82
TRANSPORTATION AND PUBLIC UTILITIES	30	535	546	559	4,437,868	624.47
WHOLESALE AND RETAIL TRADE	73	587	583	583	1,948,304	256.48
WHOLESALE TRADE	12	44	44	46	262,320	451.76
RETAIL TRADE	61	543	539	537	1,685,984	240.32
FINANCE, INSURANCE, AND REAL ESTATE	22	115	114	115	581,186	389.88
SERVICES	53	339	340	347	1,253,344	281.90
LOCAL GOVERNMENT	20	725	728	731	3,527,184	372.69
STATE GOVERNMENT	13	86	90	88	480,025	419.60
OTHER NONMANUFACTURING	33	445	427	418	3,016,165	539.56
LOGAN COUNTY - TOTAL	408	5,802	5,845	5,868	\$29,784,625	\$392.43
MANUFACTURING	38	2,171	2,198	2,199	13,777,307	484.07
NONMANUFACTURING	370	3,631	3,647	3,669	16,007,318	337.44
CONSTRUCTION	28	83	97	96	491,323	410.81
TRANSPORTATION AND PUBLIC UTILITIES	33	96	99	99	637,296	500.23
WHOLESALE AND RETAIL TRADE	125	1,155	1,140	1,157	3,753,772	250.94
WHOLESALE TRADE	25	92	92	94	411,675	341.73
RETAIL TRADE	100	1,063	1,048	1,063	3,342,097	242.99
FINANCE, INSURANCE, AND REAL ESTATE	39	234	235	236	1,500,889	491.29
SERVICES	97	813	814	808	3,494,974	331.22
LOCAL GOVERNMENT	23	770	771	784	3,645,279	361.81
STATE GOVERNMENT	13	424	428	428	2,159,744	389.38
OTHER NONMANUFACTURING	12	56	63	61	324,041	415.44

**TABLE 8. COUNTY SUMMARY
EMPLOYMENT AND TOTAL EARNINGS, BY INDUSTRY
FIRST QUARTER 2000**

INDUSTRY GROUP	NUMBER OF EMPLOYING UNITS	EMPLOYMENT			TOTAL EARNINGS	AVERAGE WEEKLY EARNINGS
		JANUARY	FEBRUARY	MARCH	JAN.-MAR. 2000	
LONOKE COUNTY - TOTAL	991	10,430	10,461	10,682	\$53,207,122	\$388.89
MANUFACTURING	49	1,748	1,731	1,748	13,027,733	575.17
NONMANUFACTURING	942	8,682	8,730	8,934	40,179,389	351.94
CONSTRUCTION	116	581	574	611	3,661,429	478.45
TRANSPORTATION AND PUBLIC UTILITIES	74	295	283	299	1,707,365	449.27
WHOLESALE AND RETAIL TRADE	294	3,096	3,062	3,083	10,919,250	272.68
WHOLESALE TRADE	72	434	441	447	2,949,975	514.95
RETAIL TRADE	222	2,662	2,621	2,636	7,969,275	232.23
FINANCE, INSURANCE, AND REAL ESTATE	84	443	434	443	2,840,887	496.66
SERVICES	248	1,761	1,784	1,834	7,976,720	342.22
LOCAL GOVERNMENT	27	1,896	1,953	1,954	9,683,484	385.09
STATE GOVERNMENT	15	176	178	182	979,398	421.67
OTHER NONMANUFACTURING	84	434	462	528	2,410,856	390.70
MADISON COUNTY - TOTAL	213	2,550	2,603	2,601	\$12,888,473	\$383.58
MANUFACTURING	32	871	884	868	4,563,149	401.46
NONMANUFACTURING	181	1,679	1,719	1,733	8,325,324	374.44
CONSTRUCTION	23	70	69	68	319,899	356.63
TRANSPORTATION AND PUBLIC UTILITIES	18	125	131	135	950,188	560.80
WHOLESALE AND RETAIL TRADE	55	493	513	520	1,807,583	273.35
WHOLESALE TRADE	9	52	56	58	293,345	407.80
RETAIL TRADE	46	441	457	462	1,514,238	256.94
FINANCE, INSURANCE, AND REAL ESTATE	13	92	91	91	558,401	470.30
SERVICES	51	340	350	348	1,855,676	412.56
LOCAL GOVERNMENT	8	494	497	500	2,451,406	379.42
STATE GOVERNMENT	8	49	51	51	323,479	494.36
OTHER NONMANUFACTURING	5	16	17	20	58,692	255.55
MARION COUNTY - TOTAL	271	3,910	3,925	4,022	\$18,325,742	\$356.67
MANUFACTURING	31	1,960	1,974	1,991	10,060,930	391.86
NONMANUFACTURING	240	1,950	1,951	2,031	8,264,812	321.52
CONSTRUCTION	18	59	54	61	265,491	352.11
TRANSPORTATION AND PUBLIC UTILITIES	18	86	84	86	807,605	728.01
WHOLESALE AND RETAIL TRADE	67	589	584	623	1,822,817	234.21
WHOLESALE TRADE	7	36	38	40	203,377	411.69
RETAIL TRADE	60	553	546	583	1,619,440	222.19
FINANCE, INSURANCE, AND REAL ESTATE	25	119	118	120	641,910	414.94
SERVICES	78	474	486	513	1,604,631	251.39
LOCAL GOVERNMENT	22	492	489	491	2,375,104	372.35
STATE GOVERNMENT	8	99	104	105	599,520	449.19
OTHER NONMANUFACTURING	4	32	32	32	147,734	355.13

**TABLE 8. COUNTY SUMMARY
EMPLOYMENT AND TOTAL EARNINGS, BY INDUSTRY
FIRST QUARTER 2000**

INDUSTRY GROUP	NUMBER OF EMPLOYING UNITS	EMPLOYMENT			TOTAL EARNINGS	AVERAGE WEEKLY EARNINGS
		JANUARY	FEBRUARY	MARCH	JAN.-MAR. 2000	
MILLER COUNTY - TOTAL	819	13,386	13,425	13,626	\$79,933,366	\$456.17
MANUFACTURING	43	2,788	2,798	2,799	28,218,629	776.62
NONMANUFACTURING	776	10,598	10,627	10,827	51,714,737	372.34
AGRICULTURE, FORESTRY, AND FISHING	14	58	61	68	252,363	311.43
MINING	5	25	23	22	408,904	1348.04
CONSTRUCTION	91	685	692	797	3,899,760	413.96
TRANSPORTATION AND PUBLIC UTILITIES	59	1,086	1,080	1,093	8,134,711	576.02
WHOLESALE AND RETAIL TRADE	270	3,403	3,399	3,431	13,961,373	314.85
WHOLESALE TRADE	61	787	798	793	5,093,284	494.27
RETAIL TRADE	209	2,616	2,601	2,638	8,868,089	260.53
FINANCE, INSURANCE, AND REAL ESTATE	59	397	408	408	2,994,327	569.66
SERVICES	239	2,897	2,918	2,967	10,640,698	279.61
LOCAL GOVERNMENT	24	1,577	1,572	1,576	8,585,596	419.32
STATE GOVERNMENT	15	470	474	465	2,837,005	464.65
MISSISSIPPI COUNTY - TOTAL	1,246	21,096	21,147	21,457	\$139,449,359	\$505.19
MANUFACTURING	76	8,458	8,302	8,295	76,543,770	705.01
NONMANUFACTURING	1,170	12,638	12,845	13,162	62,905,589	375.64
AGRICULTURE, FORESTRY, AND FISHING	121	485	504	576	2,216,958	326.90
CONSTRUCTION	73	388	406	495	2,801,569	501.56
TRANSPORTATION AND PUBLIC UTILITIES	68	710	690	691	5,563,846	614.04
WHOLESALE AND RETAIL TRADE	380	3,858	3,864	3,910	16,459,689	326.55
WHOLESALE TRADE	86	779	778	791	5,994,124	589.12
RETAIL TRADE	294	3,079	3,086	3,119	10,465,565	260.14
FINANCE, INSURANCE, AND REAL ESTATE	108	624	634	638	4,903,365	596.81
SERVICES	346	3,473	3,573	3,658	14,795,613	318.98
LOCAL GOVERNMENT	50	2,438	2,482	2,497	12,734,719	396.22
STATE GOVERNMENT	24	662	692	697	3,429,830	385.91
MONROE COUNTY - TOTAL	329	2,851	2,874	2,944	\$11,648,083	\$310.07
MANUFACTURING	16	337	347	353	1,497,193	\$333.18
NONMANUFACTURING	313	2,514	2,527	2,591	10,150,890	306.93
AGRICULTURE, FORESTRY, AND FISHING	34	124	134	140	588,189	341.05
CONSTRUCTION	14	48	44	50	224,878	365.46
TRANSPORTATION AND PUBLIC UTILITIES	30	131	136	136	704,290	403.30
WHOLESALE AND RETAIL TRADE	94	906	897	926	3,044,528	257.45
WHOLESALE TRADE	23	208	213	227	1,048,645	373.45
RETAIL TRADE	71	698	684	699	1,995,883	221.33
FINANCE, INSURANCE, AND REAL ESTATE	21	170	172	173	1,046,026	468.72
SERVICES	86	550	553	575	1,790,813	246.28
LOCAL GOVERNMENT	22	462	465	466	2,117,272	350.75
STATE GOVERNMENT	12	123	126	125	634,894	391.75

**TABLE 8. COUNTY SUMMARY
EMPLOYMENT AND TOTAL EARNINGS, BY INDUSTRY
FIRST QUARTER 2000**

INDUSTRY GROUP	NUMBER OF EMPLOYING UNITS	EMPLOYMENT			TOTAL EARNINGS	AVERAGE WEEKLY EARNINGS
		JANUARY	FEBRUARY	MARCH	JAN.-MAR. 2000	
MONTGOMERY COUNTY - TOTAL	180	1,484	1,539	1,577	\$6,510,829	\$326.63
MANUFACTURING	34	312	312	316	1,213,843	298.00
NONMANUFACTURING	146	1,172	1,227	1,261	5,296,986	333.98
CONSTRUCTION	22	188	191	193	1,051,459	424.20
TRANSPORTATION AND PUBLIC UTILITIES	10	32	30	26	114,573	300.45
WHOLESALE AND RETAIL TRADE	45	213	216	214	755,652	271.20
WHOLESALE TRADE	9	27	28	28	153,329	426.31
RETAIL TRADE	36	186	188	186	602,323	248.21
FINANCE, INSURANCE, AND REAL ESTATE SERVICES	9	75	76	75	382,557	390.63
SERVICES	40	180	223	263	792,239	274.51
LOCAL GOVERNMENT	9	410	421	420	1,826,985	337.02
STATE GOVERNMENT	8	62	60	59	333,934	425.76
OTHER NONMANUFACTURING	3	12	10	11	39,587	276.83
NEVADA COUNTY - TOTAL	199	2,312	2,297	2,351	\$13,980,603	\$463.55
MANUFACTURING	16	658	650	663	6,727,586	787.68
NONMANUFACTURING	183	1,654	1,647	1,688	7,253,017	335.49
TRANSPORTATION AND PUBLIC UTILITIES	15	171	173	175	1,309,160	582.11
WHOLESALE AND RETAIL TRADE	49	366	358	380	1,115,949	233.27
WHOLESALE TRADE	7	41	42	51	127,589	219.73
RETAIL TRADE	42	325	316	329	988,360	235.14
FINANCE, INSURANCE, AND REAL ESTATE SERVICES	15	47	45	46	269,352	450.42
SERVICES	45	456	460	455	1,753,711	295.19
LOCAL GOVERNMENT	28	482	477	488	2,042,814	325.79
STATE GOVERNMENT	11	82	82	83	486,313	454.36
OTHER NONMANUFACTURING	20	50	52	61	275,718	390.35
NEWTON COUNTY - TOTAL	121	1,022	1,051	1,096	\$4,115,253	\$299.68
MANUFACTURING	24	105	120	127	414,572	271.79
NONMANUFACTURING	97	917	931	969	3,700,681	303.16
CONSTRUCTION	8	10	15	19	69,621	365.15
WHOLESALE AND RETAIL TRADE	22	172	182	185	497,961	213.20
WHOLESALE TRADE	3	19	21	21	76,063	287.75
RETAIL TRADE	19	153	161	164	421,898	203.68
SERVICES	28	191	195	209	615,916	238.88
LOCAL GOVERNMENT	12	389	387	406	1,801,264	351.67
STATE GOVERNMENT	8	92	91	87	435,339	372.08
OTHER NONMANUFACTURING	19	63	61	63	280,580	346.25

TABLE 8. COUNTY SUMMARY
EMPLOYMENT AND TOTAL EARNINGS, BY INDUSTRY
FIRST QUARTER 2000

INDUSTRY GROUP	NUMBER OF EMPLOYING UNITS	EMPLOYMENT			TOTAL EARNINGS	AVERAGE WEEKLY EARNINGS
		JANUARY	FEBRUARY	MARCH	JAN.-MAR. 2000	
OUACHITA COUNTY - TOTAL	680	8,124	8,051	8,167	\$46,476,228	\$440.61
MANUFACTURING	64	1,684	1,676	1,685	14,035,737	642.03
NONMANUFACTURING	616	6,440	6,375	6,482	32,440,491	387.95
AGRICULTURE, FORESTRY, AND FISHING	14	86	83	86	886,837	802.57
MINING	13	102	103	106	630,978	468.20
CONSTRUCTION	50	239	203	227	1,134,018	391.18
TRANSPORTATION AND PUBLIC UTILITIES	57	372	367	373	3,029,008	628.60
WHOLESALE AND RETAIL TRADE	217	2,134	2,117	2,160	8,352,140	300.64
WHOLESALE TRADE	44	352	355	363	2,601,315	561.03
RETAIL TRADE	173	1,782	1,762	1,797	5,750,825	248.48
FINANCE, INSURANCE, AND REAL ESTATE	48	314	316	322	2,005,338	486.10
SERVICES	174	1,677	1,657	1,662	8,094,253	373.88
LOCAL GOVERNMENT	31	1,237	1,249	1,258	6,369,586	392.60
STATE GOVERNMENT	12	279	280	288	1,938,333	528.11
PERRY COUNTY - TOTAL	137	1,080	1,077	1,098	\$4,810,696	\$341.06
MANUFACTURING	6	83	82	82	378,348	353.49
NONMANUFACTURING	131	997	995	1,016	4,432,348	340.04
CONSTRUCTION	20	70	69	73	352,830	384.07
TRANSPORTATION AND PUBLIC UTILITIES	7	36	37	38	267,395	555.91
WHOLESALE AND RETAIL TRADE	33	194	192	197	570,751	225.92
WHOLESALE TRADE	6	9	9	9	45,141	385.82
RETAIL TRADE	27	185	183	188	525,610	218.16
SERVICES	36	208	204	210	817,076	303.14
LOCAL GOVERNMENT	12	358	357	360	1,654,532	355.18
STATE GOVERNMENT	8	64	68	69	360,208	413.56
OTHER NONMANUFACTURING	15	67	68	69	409,556	463.30
PHILLIPS COUNTY - TOTAL	666	7,609	7,672	7,862	\$39,934,103	\$398.20
MANUFACTURING	26	1,108	1,127	1,149	8,133,833	554.68
NONMANUFACTURING	640	6,501	6,545	6,713	31,800,270	371.40
AGRICULTURE, FORESTRY, AND FISHING	66	295	293	394	1,404,312	330.01
TRANSPORTATION AND PUBLIC UTILITIES	45	335	332	337	2,812,525	646.46
WHOLESALE AND RETAIL TRADE	202	1,877	1,903	1,921	8,270,615	334.78
WHOLESALE TRADE	40	563	585	594	3,692,029	489.10
RETAIL TRADE	162	1,314	1,318	1,327	4,578,586	266.88
FINANCE, INSURANCE, AND REAL ESTATE	48	286	294	289	1,635,941	434.44
SERVICES	191	1,622	1,614	1,634	7,349,475	348.26
LOCAL GOVERNMENT	33	1,383	1,381	1,390	6,511,420	361.73
STATE GOVERNMENT	15	528	527	529	2,804,066	408.52
OTHER NONMANUFACTURING	40	175	201	219	1,011,916	392.47

**TABLE 8. COUNTY SUMMARY
EMPLOYMENT AND TOTAL EARNINGS, BY INDUSTRY
FIRST QUARTER 2000**

INDUSTRY GROUP	NUMBER OF EMPLOYING UNITS	EMPLOYMENT			TOTAL EARNINGS	AVERAGE WEEKLY EARNINGS
		JANUARY	FEBRUARY	MARCH	JAN.-MAR. 2000	
PIKE COUNTY - TOTAL	270	3,019	3,028	3,065	\$13,623,918	\$345.04
MANUFACTURING	44	762	748	749	3,728,559	380.89
NONMANUFACTURING	226	2,257	2,280	2,316	9,895,359	333.22
AGRICULTURE, FORESTRY, AND FISHING	7	128	131	124	516,260	311.06
MINING	3	66	65	65	490,359	577.35
CONSTRUCTION	16	94	103	103	607,013	466.93
TRANSPORTATION AND PUBLIC UTILITIES	30	170	168	175	1,260,185	566.88
WHOLESALE AND RETAIL TRADE	86	672	676	686	2,145,792	243.45
WHOLESALE TRADE	17	118	119	119	457,763	296.73
RETAIL TRADE	69	554	557	567	1,688,029	232.15
FINANCE, INSURANCE, AND REAL ESTATE	23	194	205	217	998,540	374.08
SERVICES	37	283	277	280	1,011,494	277.88
LOCAL GOVERNMENT	13	517	520	533	2,296,342	337.53
STATE GOVERNMENT	11	133	135	133	569,374	327.67
POINSETT COUNTY - TOTAL	499	6,411	6,490	6,589	\$33,030,232	\$391.09
MANUFACTURING	26	2,103	2,152	2,174	12,632,048	453.43
NONMANUFACTURING	473	4,308	4,338	4,415	20,398,184	360.41
AGRICULTURE, FORESTRY, AND FISHING	48	219	229	243	1,234,474	412.27
TRANSPORTATION AND PUBLIC UTILITIES	45	212	215	223	1,548,287	549.69
WHOLESALE AND RETAIL TRADE	151	1,472	1,485	1,509	6,120,491	316.26
WHOLESALE TRADE	27	406	409	417	2,811,859	526.70
RETAIL TRADE	124	1,066	1,076	1,092	3,308,632	236.09
FINANCE, INSURANCE, AND REAL ESTATE	43	343	341	344	1,851,632	415.66
SERVICES	108	617	616	631	2,571,122	318.31
LOCAL GOVERNMENT	31	1,097	1,104	1,113	5,321,421	370.56
STATE GOVERNMENT	16	204	198	196	1,114,628	430.14
OTHER NONMANUFACTURING	31	144	150	156	636,129	326.22
POLK COUNTY - TOTAL	529	6,708	6,749	6,823	\$31,048,825	\$353.31
MANUFACTURING	64	2,389	2,401	2,411	11,880,836	380.74
NONMANUFACTURING	465	4,319	4,348	4,412	19,167,989	338.20
AGRICULTURE, FORESTRY, AND FISHING	21	180	177	182	1,062,189	454.77
CONSTRUCTION	38	129	122	133	574,087	345.00
TRANSPORTATION AND PUBLIC UTILITIES	57	477	480	496	2,722,250	432.35
WHOLESALE AND RETAIL TRADE	141	1,312	1,308	1,345	4,280,767	249.15
WHOLESALE TRADE	31	173	173	175	923,822	409.19
RETAIL TRADE	110	1,139	1,135	1,170	3,356,945	224.94
FINANCE, INSURANCE, AND REAL ESTATE	36	212	211	210	1,192,733	434.83
SERVICES	136	1,018	1,011	1,006	4,338,155	329.86
LOCAL GOVERNMENT	21	744	757	750	3,624,974	371.63
STATE GOVERNMENT	15	247	282	290	1,372,834	386.82

**TABLE 8. COUNTY SUMMARY
EMPLOYMENT AND TOTAL EARNINGS, BY INDUSTRY
FIRST QUARTER 2000**

INDUSTRY GROUP	NUMBER OF EMPLOYING UNITS	EMPLOYMENT			TOTAL EARNINGS	AVERAGE WEEKLY EARNINGS
		JANUARY	FEBRUARY	MARCH	JAN.-MAR. 2000	
POPE COUNTY - TOTAL	1,524	23,551	23,753	24,093	\$152,987,887	\$494.49
MANUFACTURING	105	5,024	5,040	5,061	34,775,046	530.58
NONMANUFACTURING	1,419	18,527	18,713	19,032	118,212,841	484.79
CONSTRUCTION	158	1,104	1,106	1,117	7,562,349	524.54
TRANSPORTATION AND PUBLIC UTILITIES	100	2,491	2,487	2,574	37,589,498	1148.64
WHOLESALE AND RETAIL TRADE	482	5,762	5,764	5,830	22,203,429	295.22
WHOLESALE TRADE	113	843	851	849	5,826,481	528.73
RETAIL TRADE	369	4,919	4,913	4,981	16,376,948	255.13
FINANCE, INSURANCE, AND REAL ESTATE SERVICES	131	652	662	663	4,339,643	506.55
SERVICES	458	4,817	4,837	4,950	23,902,268	377.70
LOCAL GOVERNMENT	40	1,953	1,976	1,989	11,407,448	444.83
STATE GOVERNMENT	15	913	981	994	6,786,462	542.28
OTHER NONMANUFACTURING	35	835	900	915	4,421,744	385.06
PRAIRIE COUNTY - TOTAL	238	1,756	1,759	1,794	\$8,473,161	\$368.31
MANUFACTURING	9	263	259	269	1,913,600	558.28
NONMANUFACTURING	229	1,493	1,500	1,525	6,559,561	335.05
AGRICULTURE, FORESTRY, AND FISHING	26	130	123	138	629,621	371.60
TRANSPORTATION AND PUBLIC UTILITIES	25	93	91	86	510,967	436.72
WHOLESALE AND RETAIL TRADE	67	425	441	454	1,632,102	285.33
WHOLESALE TRADE	11	88	96	104	516,556	413.91
RETAIL TRADE	56	337	345	350	1,115,546	249.45
SERVICES	58	283	283	290	957,351	258.09
LOCAL GOVERNMENT	15	363	361	358	1,620,232	345.56
STATE GOVERNMENT	10	58	58	56	345,215	463.17
OTHER NONMANUFACTURING	28	141	143	143	864,073	466.98
PULASKI COUNTY - TOTAL	12,579	232,041	232,487	233,999	\$1,750,563,377	\$578.33
MANUFACTURING	482	21,300	21,280	21,555	177,404,020	638.33
NONMANUFACTURING	12,097	210,741	211,207	212,444	1,573,159,357	572.26
AGRICULTURE, FORESTRY, AND FISHING	187	1,363	1,405	1,454	7,136,814	390.09
MINING	6	311	323	328	3,572,197	856.92
CONSTRUCTION	1,017	10,455	10,451	10,560	79,645,284	584.11
TRANSPORTATION AND PUBLIC UTILITIES	511	18,590	18,603	18,646	188,028,145	777.08
WHOLESALE AND RETAIL TRADE	3,681	56,789	57,104	57,398	324,382,294	437.02
WHOLESALE TRADE	1,228	16,092	16,115	16,178	149,741,564	714.18
RETAIL TRADE	2,453	40,697	40,989	41,220	174,640,730	327.91
FINANCE, INSURANCE, AND REAL ESTATE SERVICES	1,398	15,708	15,693	15,664	209,471,119	1027.08
SERVICES	5,037	69,909	70,139	70,921	473,952,539	518.43
LOCAL GOVERNMENT	101	16,168	16,118	16,139	113,483,361	540.80
STATE GOVERNMENT	159	21,448	21,371	21,334	173,487,604	624.06

**TABLE 8. COUNTY SUMMARY
EMPLOYMENT AND TOTAL EARNINGS, BY INDUSTRY
FIRST QUARTER 2000**

INDUSTRY GROUP	NUMBER OF EMPLOYING UNITS	EMPLOYMENT			TOTAL EARNINGS	AVERAGE WEEKLY EARNINGS
		JANUARY	FEBRUARY	MARCH	JAN.-MAR. 2000	
RANDOLPH COUNTY - TOTAL	386	5,473	5,499	5,518	\$26,390,005	\$369.31
MANUFACTURING	40	1,864	1,840	1,835	10,626,666	442.73
NONMANUFACTURING	346	3,609	3,659	3,683	15,763,339	332.18
AGRICULTURE, FORESTRY, AND FISHING	19	37	41	56	137,909	237.50
CONSTRUCTION	27	107	98	96	473,387	362.93
TRANSPORTATION AND PUBLIC UTILITIES	22	117	115	117	956,311	632.34
WHOLESALE AND RETAIL TRADE	113	1,140	1,160	1,182	3,668,736	243.15
WHOLESALE TRADE	19	147	156	161	709,156	352.70
RETAIL TRADE	94	993	1,004	1,021	2,959,580	226.30
FINANCE, INSURANCE, AND REAL ESTATE	22	178	179	179	1,482,294	638.19
SERVICES	110	1,111	1,129	1,127	4,550,976	311.92
LOCAL GOVERNMENT	22	722	736	726	3,271,345	345.66
STATE GOVERNMENT	11	197	201	200	1,222,381	471.72
SAINT FRANCIS COUNTY - TOTAL	647	8,953	8,993	9,084	\$45,779,309	\$390.84
MANUFACTURING	34	2,239	2,202	2,079	13,829,347	489.48
NONMANUFACTURING	613	6,714	6,791	7,005	31,949,962	359.49
CONSTRUCTION	52	243	241	280	1,401,782	423.41
TRANSPORTATION AND PUBLIC UTILITIES	39	365	369	367	3,081,509	645.88
WHOLESALE AND RETAIL TRADE	202	2,241	2,237	2,334	8,946,750	303.09
WHOLESALE TRADE	39	517	511	537	3,386,865	499.41
RETAIL TRADE	163	1,724	1,726	1,797	5,559,885	244.53
FINANCE, INSURANCE, AND REAL ESTATE	54	267	264	273	1,563,326	448.72
SERVICES	186	1,668	1,675	1,701	6,578,117	300.96
LOCAL GOVERNMENT	31	1,307	1,310	1,298	6,562,171	386.81
STATE GOVERNMENT	15	502	566	564	3,154,956	446.12
OTHER NONMANUFACTURING	34	121	129	188	661,351	348.45
SALINE COUNTY - TOTAL	1,388	17,521	17,588	17,737	\$106,065,956	\$463.17
MANUFACTURING	90	2,501	2,450	2,486	23,172,282	719.03
NONMANUFACTURING	1,298	15,020	15,138	15,251	82,893,674	421.27
CONSTRUCTION	219	1,357	1,379	1,413	8,646,510	480.92
TRANSPORTATION AND PUBLIC UTILITIES	63	445	442	448	3,269,445	565.16
WHOLESALE AND RETAIL TRADE	416	4,922	4,916	4,972	24,532,935	382.27
WHOLESALE TRADE	105	575	573	582	4,109,927	548.23
RETAIL TRADE	311	4,347	4,343	4,390	20,423,008	360.32
FINANCE, INSURANCE, AND REAL ESTATE	122	588	600	602	3,620,017	466.70
SERVICES	398	3,721	3,767	3,801	19,385,453	396.28
LOCAL AND STATE GOVERNMENT	49	3,903	3,954	3,927	23,081,895	452.02
OTHER NONMANUFACTURING	31	84	80	88	357,419	327.31

**TABLE 8. COUNTY SUMMARY
EMPLOYMENT AND TOTAL EARNINGS, BY INDUSTRY
FIRST QUARTER 2000**

INDUSTRY GROUP	NUMBER OF EMPLOYING UNITS	EMPLOYMENT			TOTAL EARNINGS	AVERAGE WEEKLY EARNINGS
		JANUARY	FEBRUARY	MARCH	JAN.-MAR. 2000	
SCOTT COUNTY - TOTAL	200	3,305	3,280	3,295	\$14,764,086	\$344.85
MANUFACTURING	31	1,597	1,578	1,578	7,736,976	375.65
NONMANUFACTURING	169	1,708	1,702	1,717	7,027,110	316.29
AGRICULTURE, FORESTRY, AND FISHING	10	162	163	165	848,487	399.60
TRANSPORTATION AND PUBLIC UTILITIES	17	117	115	118	599,301	395.14
WHOLESALE AND RETAIL TRADE	61	586	589	593	1,732,872	226.18
WHOLESALE TRADE	10	92	88	89	364,195	312.43
RETAIL TRADE	51	494	501	504	1,368,677	210.71
FINANCE, INSURANCE, AND REAL ESTATE	14	74	77	77	360,364	364.74
SERVICES	42	314	312	314	1,409,361	346.00
LOCAL GOVERNMENT	5	341	332	336	1,598,408	365.57
STATE GOVERNMENT	8	60	59	58	305,371	398.14
OTHER NONMANUFACTURING	12	54	55	56	172,946	241.88
SEARCY COUNTY - TOTAL	157	1,610	1,605	1,619	\$6,214,164	\$296.66
MANUFACTURING	15	237	246	242	1,034,209	329.19
NONMANUFACTURING	142	1,373	1,359	1,377	5,179,955	290.92
TRANSPORTATION AND PUBLIC UTILITIES	13	44	42	44	235,821	418.62
WHOLESALE AND RETAIL TRADE	52	361	370	400	939,024	191.60
WHOLESALE TRADE	10	59	64	70	188,904	225.87
RETAIL TRADE	42	302	306	330	750,120	184.55
FINANCE, INSURANCE, AND REAL ESTATE	13	58	54	54	211,867	294.53
SERVICES	30	278	276	279	935,625	259.20
LOCAL GOVERNMENT	12	323	328	329	1,417,811	333.86
STATE GOVERNMENT	9	174	175	176	1,005,044	441.78
OTHER NONMANUFACTURING	13	135	114	95	434,763	291.66
SEBASTIAN COUNTY - TOTAL	3,435	72,654	72,916	73,823	\$488,504,233	\$513.83
MANUFACTURING	250	23,439	23,402	23,278	175,039,611	576.07
NONMANUFACTURING	3,185	49,215	49,514	50,545	313,464,622	484.60
AGRICULTURE, FORESTRY, AND FISHING	49	313	320	328	1,733,863	416.36
MINING	53	522	500	485	4,838,238	740.89
CONSTRUCTION	275	2,958	2,943	3,023	20,264,924	524.04
TRANSPORTATION AND PUBLIC UTILITIES	182	3,162	3,109	3,098	34,136,016	840.81
WHOLESALE AND RETAIL TRADE	1,095	14,698	14,688	14,823	72,325,139	377.53
WHOLESALE TRADE	282	2,668	2,652	2,686	21,306,970	614.16
RETAIL TRADE	813	12,030	12,036	12,137	51,018,169	325.21
FINANCE, INSURANCE, AND REAL ESTATE	328	2,400	2,382	2,384	22,608,169	728.06
SERVICES	1,138	20,203	20,476	21,318	125,024,862	465.38
LOCAL GOVERNMENT	43	3,945	3,955	3,950	25,717,117	500.82
STATE GOVERNMENT	22	1,014	1,141	1,136	6,816,294	477.97

**TABLE 8. COUNTY SUMMARY
EMPLOYMENT AND TOTAL EARNINGS, BY INDUSTRY
FIRST QUARTER 2000**

INDUSTRY GROUP	NUMBER OF EMPLOYING UNITS	EMPLOYMENT			TOTAL EARNINGS	AVERAGE WEEKLY EARNINGS
		JANUARY	FEBRUARY	MARCH	JAN.-MAR. 2000	
SEVIER COUNTY - TOTAL	317	5,512	5,502	5,466	\$27,520,724	\$385.37
MANUFACTURING	25	2,459	2,414	2,396	12,665,699	402.10
NONMANUFACTURING	292	3,053	3,088	3,070	14,855,025	372.17
CONSTRUCTION	25	112	112	110	558,896	386.16
TRANSPORTATION AND PUBLIC UTILITIES	21	103	104	102	780,914	583.21
WHOLESALE AND RETAIL TRADE	90	948	947	960	3,755,191	303.53
WHOLESALE TRADE	23	175	174	177	1,411,532	619.27
RETAIL TRADE	67	773	773	783	2,343,659	232.22
FINANCE, INSURANCE, AND REAL ESTATE	23	143	145	145	1,037,125	552.74
SERVICES	96	753	775	758	3,758,858	379.45
LOCAL GOVERNMENT	11	662	660	652	3,116,320	364.31
STATE GOVERNMENT	10	163	176	175	1,098,416	493.15
OTHER NONMANUFACTURING	16	169	169	168	749,305	341.73
SHARP COUNTY - TOTAL	407	4,160	4,139	4,204	\$17,241,054	\$318.22
MANUFACTURING	20	485	491	487	1,906,860	300.78
NONMANUFACTURING	387	3,675	3,648	3,717	15,334,194	320.53
CONSTRUCTION	40	132	128	133	613,398	360.19
TRANSPORTATION AND PUBLIC UTILITIES	35	406	411	424	2,858,331	531.52
WHOLESALE AND RETAIL TRADE	131	1,083	1,073	1,119	2,990,532	210.72
WHOLESALE TRADE	19	59	61	60	224,548	287.88
RETAIL TRADE	112	1,024	1,012	1,059	2,765,984	206.24
FINANCE, INSURANCE, AND REAL ESTATE	33	206	203	206	1,108,395	415.91
SERVICES	104	957	946	945	3,938,519	319.13
LOCAL GOVERNMENT	29	768	764	764	3,194,043	321.03
STATE GOVERNMENT	10	98	98	100	557,052	434.29
OTHER NONMANUFACTURING	5	25	25	26	73,924	224.47
STONE COUNTY - TOTAL	254	2,932	2,950	3,001	\$12,245,267	\$318.12
MANUFACTURING	27	821	824	820	3,305,504	309.46
NONMANUFACTURING	227	2,111	2,126	2,181	8,939,763	321.44
CONSTRUCTION	21	89	92	101	321,628	263.20
WHOLESALE AND RETAIL TRADE	87	709	721	753	2,479,304	262.09
WHOLESALE TRADE	15	41	44	49	160,110	275.73
RETAIL TRADE	72	668	677	704	2,319,194	261.20
FINANCE, INSURANCE, AND REAL ESTATE	13	78	80	83	454,333	435.05
SERVICES	59	486	502	503	2,135,134	330.46
LOCAL GOVERNMENT	10	390	388	388	1,789,092	354.09
STATE GOVERNMENT	13	242	221	224	975,105	327.55
OTHER NONMANUFACTURING	24	117	122	129	785,167	492.37

**TABLE 8. COUNTY SUMMARY
EMPLOYMENT AND TOTAL EARNINGS, BY INDUSTRY
FIRST QUARTER 2000**

INDUSTRY GROUP	NUMBER OF EMPLOYING UNITS	EMPLOYMENT			TOTAL EARNINGS	AVERAGE WEEKLY EARNINGS
		JANUARY	FEBRUARY	MARCH	JAN.-MAR. 2000	
UNION COUNTY - TOTAL	1,382	20,854	21,081	21,264	\$138,205,578	\$504.65
MANUFACTURING	89	6,250	6,267	6,244	52,403,381	644.59
NONMANUFACTURING	1,293	14,604	14,814	15,020	85,802,197	445.58
AGRICULTURE , FORESTRY AND FISHING	28	148	150	151	651,542	334.87
MINING	62	398	404	405	5,489,770	1049.60
CONSTRUCTION	107	1,469	1,506	1,614	11,791,972	592.99
TRANSPORTATION AND PUBLIC UTILITIES	83	1,312	1,308	1,288	12,085,579	713.66
WHOLESALE AND RETAIL TRADE	416	3,885	3,954	3,993	17,172,749	334.93
WHOLESALE TRADE	106	694	698	711	5,896,563	647.05
RETAIL TRADE	310	3,191	3,256	3,282	11,276,186	267.47
FINANCE, INSURANCE, AND REAL ESTATE	104	687	680	674	5,203,387	588.33
SERVICES	437	4,231	4,286	4,349	19,672,016	352.84
LOCAL GOVERNMENT	38	1,936	1,947	1,964	10,308,111	406.84
STATE GOVERNMENT	18	538	579	582	3,427,071	465.49
VAN BUREN COUNTY - TOTAL	345	3,584	3,560	3,662	\$15,961,053	\$340.86
MANUFACTURING	19	705	689	709	3,352,453	367.88
NONMANUFACTURING	326	2,879	2,871	2,953	12,608,600	334.33
CONSTRUCTION	38	119	121	124	625,798	396.74
TRANSPORTATION AND PUBLIC UTILITIES	34	246	241	245	1,429,842	450.77
WHOLESALE AND RETAIL TRADE	106	823	809	837	2,536,459	237.07
WHOLESALE TRADE	13	47	49	52	220,661	344.07
RETAIL TRADE	93	776	760	785	2,315,798	230.25
FINANCE, INSURANCE, AND REAL ESTATE	25	132	130	131	1,091,670	641.03
SERVICES	91	767	765	798	3,317,283	328.55
LOCAL GOVERNMENT	13	587	597	605	2,465,744	318.06
STATE GOVERNMENT	8	121	120	120	685,285	438.07
OTHER NONMANUFACTURING	11	84	88	93	456,519	397.55
WASHINGTON COUNTY - TOTAL	4,298	77,363	77,948	78,775	\$490,465,095	\$483.52
MANUFACTURING	219	18,129	18,374	18,484	135,929,358	570.47
NONMANUFACTURING	4,079	59,234	59,574	60,291	354,535,737	456.82
CONSTRUCTION	421	3,639	3,655	3,731	25,786,401	539.75
TRANSPORTATION AND PUBLIC UTILITIES	242	5,675	5,694	5,709	44,953,336	607.44
WHOLESALE AND RETAIL TRADE	1,346	19,369	19,532	19,779	90,260,231	354.96
WHOLESALE TRADE	329	3,534	3,517	3,576	30,823,867	669.35
RETAIL TRADE	1,017	15,835	16,015	16,203	59,436,364	285.44
FINANCE, INSURANCE, AND REAL ESTATE	416	2,706	2,718	2,759	22,329,892	629.73
SERVICES	1,480	16,445	16,556	16,830	93,298,894	432.07
LOCAL AND STATE GOVERNMENT	84	10,563	10,599	10,626	73,241,540	531.71
OTHER NONMANUFACTURING	90	837	820	857	4,665,443	428.26

**TABLE 8. COUNTY SUMMARY
EMPLOYMENT AND TOTAL EARNINGS, BY INDUSTRY
FIRST QUARTER 2000**

INDUSTRY GROUP	NUMBER OF EMPLOYING UNITS	EMPLOYMENT			TOTAL EARNINGS	AVERAGE WEEKLY EARNINGS
		JANUARY	FEBRUARY	MARCH	JAN.-MAR. 2000	
WHITE COUNTY - TOTAL	1,426	23,149	23,270	23,571	\$134,463,619	\$443.35
MANUFACTURING	96	4,920	4,976	5,022	34,374,136	531.74
NONMANUFACTURING	1,330	18,229	18,294	18,549	100,089,483	419.41
CONSTRUCTION	162	1,087	1,106	1,186	6,654,623	454.48
TRANSPORTATION AND PUBLIC UTILITIES	84	1,362	1,340	1,358	9,877,825	561.45
WHOLESALE AND RETAIL TRADE	510	6,861	6,830	6,978	32,593,766	363.91
WHOLESALE TRADE	110	703	701	715	4,415,517	480.87
RETAIL TRADE	400	6,158	6,129	6,263	28,178,249	350.55
FINANCE, INSURANCE, AND REAL ESTATE	111	682	692	697	3,712,528	413.68
SERVICES	361	5,173	5,225	5,188	31,286,849	463.24
LOCAL GOVERNMENT	45	2,240	2,261	2,290	11,259,892	382.63
STATE GOVERNMENT	19	624	646	648	3,700,027	445.18
OTHER NONMANUFACTURING	38	200	194	204	1,003,973	387.43
WOODRUFF COUNTY - TOTAL	199	2,371	2,434	2,488	\$12,275,059	\$388.41
MANUFACTURING	8	490	497	497	2,977,382	463.00
NONMANUFACTURING	191	1,881	1,937	1,991	9,297,677	369.36
AGRICULTURE, FORESTRY, AND FISHING	22	68	80	106	348,951	317.04
CONSTRUCTION	8	83	93	80	468,864	422.65
TRANSPORTATION AND PUBLIC UTILITIES	16	141	135	140	914,547	507.33
WHOLESALE AND RETAIL TRADE	67	733	778	814	3,668,346	364.10
WHOLESALE TRADE	21	469	518	545	2,896,394	436.29
RETAIL TRADE	46	264	260	269	771,952	224.64
FINANCE, INSURANCE, AND REAL ESTATE	14	73	71	72	364,409	389.33
SERVICES	45	206	209	206	971,609	361.06
LOCAL GOVERNMENT	10	512	506	508	2,207,075	333.76
STATE GOVERNMENT	9	65	65	65	353,876	418.79
YELL COUNTY - TOTAL	416	6,831	6,836	6,891	\$32,812,383	\$368.33
MANUFACTURING	41	2,969	2,970	3,004	14,960,155	386.04
NONMANUFACTURING	375	3,862	3,866	3,887	17,852,228	354.69
CONSTRUCTION	53	389	364	344	1,668,271	350.94
TRANSPORTATION AND PUBLIC UTILITIES	23	196	194	206	1,547,430	599.16
WHOLESALE AND RETAIL TRADE	111	931	932	957	3,023,837	247.45
WHOLESALE TRADE	24	109	122	126	514,037	332.28
RETAIL TRADE	87	822	810	831	2,509,800	235.15
FINANCE, INSURANCE, AND REAL ESTATE	29	205	203	206	1,721,897	647.17
SERVICES	101	666	695	696	2,702,206	303.15
LOCAL GOVERNMENT	28	1,070	1,078	1,080	5,134,890	367.09
STATE GOVERNMENT	12	124	122	121	629,911	396.09
OTHER NONMANUFACTURING	18	281	278	277	1,423,786	393.02

TABLE 8. COUNTY SUMMARY
 EMPLOYMENT AND TOTAL EARNINGS, BY INDUSTRY
 FIRST QUARTER 2000

INDUSTRY GROUP	NUMBER OF EMPLOYING UNITS	EMPLOYMENT			TOTAL EARNINGS	AVERAGE WEEKLY EARNINGS
		JANUARY	FEBRUARY	MARCH	JAN.-MAR. 2000	
REST-OF-STATE-TOTAL	3,686	14,772	15,150	15,628	\$151,864,307	\$769.39
MINING	29	46	55	56	659,101	968.79
CONSTRUCTION	641	4,007	4,310	4,793	32,085,661	564.79
TRANSPORTATION AND PUBLIC UTILITIES	175	659	695	691	5,568,224	628.35
WHOLESALE AND RETAIL TRADE	1,498	4,947	4,975	5,059	73,977,790	1139.56
WHOLESALE TRADE	1,402	4,559	4,612	4,681	71,182,874	1185.88
RETAIL TRADE	96	388	363	378	2,794,916	571.28
FINANCE, INSURANCE, AND REAL ESTATE	201	571	576	591	5,878,834	780.58
SERVICES	1,095	3,619	3,613	3,670	27,872,943	590.00
OTHER	47	923	926	768	5,821,754	513.37

TABLE 9. FEDERAL GOVERNMENT EMPLOYMENT AND EARNINGS IN ARKANSAS

INDUSTRY	NUMBER OF EMPLOYING UNITS	EMPLOYMENT			TOTAL EARNINGS
		JAN.	FEB.	MAR.	JAN.-MAR. 2000
Manufacturing	2	919	915	910	\$9,847,681
Transportation and Public Utilities	432	7,183	7,172	7,149	72,043,474
Retail Trade	3	309	297	294	1,177,609
Finance, Insurance, and Real Estate	24	204	203	204	2,339,708
Services	40	5,141	5,086	5,063	60,312,875
Public Administration	562	7,190	7,277	9,353	75,427,443
TOTAL	1,063	20,946	20,950	22,973	221,148,790

